

PKHA1 Rabbit pAb

CatalogNo: YN2409

Key Features

Host Species

- Rabbit

Reactivity

- Human, Mouse

Applications

- WB, ELISA

MW

- 44kD (Observed)

Isotype

- IgG

Recommended Dilution Ratios

WB 1:500-2000

ELISA 1:5000-20000

Storage

Storage*

-15°C to -25°C/1 year (Do not lower than -25°C)

Formulation

Liquid in PBS containing 50% glycerol, and 0.02% sodium azide.

Basic Information

Clonality

Polyclonal

Immunogen Information

Immunogen

Synthesized peptide derived from human protein . at AA range: 170-250

Specificity

PKHA1 Polyclonal Antibody detects endogenous levels of protein.

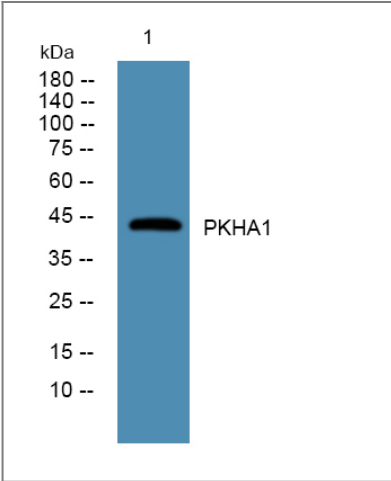
Target Information

Gene name

PLEKHA1 TAPP1

Protein Name	Pleckstrin homology domain-containing family A member 1 (PH domain-containing family A member 1) (Tandem PH domain-containing protein 1) (TAPP-1)		
	Organism	Gene ID	UniProt ID
	Human	59338 ;	Q9HB21 ;
	Mouse		Q8BUL6 ;
Cellular Localization	Cytoplasm . Cell membrane ; Peripheral membrane protein. Nucleus . Locates to the plasma membrane after treatments that stimulate the production of PtdIns3,4P2. .		
Tissue specificity	Highly expressed in skeletal muscle, thymus, pancreas, placenta and lung. Detected at low levels in brain, heart, peripheral blood leukocytes, testis, ovary, spinal cord, thyroid, kidney, liver, small intestine and colon.		
Function	Domain:Binds to membranes enriched in PtdIns3,4P2 via the C-terminal PH domain.,Function:Binds specifically to phosphatidylinositol-3,4-diphosphate (PtdIns3,4P2), but not to other phosphoinositides. May recruit other proteins to the plasma membrane.,similarity:Contains 1 PH domain.,similarity:Contains 2 PH domains.,subcellular location:Locates to the plasma membrane after treatments that stimulate the production of PtdIns3,4P2.,subunit:Binds MPDZ and PTPN13.,tissue specificity:Highly expressed in skeletal muscle, thymus, pancreas, placenta and lung. Detected at low levels in brain, heart, peripheral blood leukocytes, testis, ovary, spinal cord, thyroid, kidney, liver, small intestine and colon.,		

Validation Data



Western blot analysis of lysates from SW480 cells, primary antibody was diluted at 1:1000, 4°over night

Contact information

Orders: order.cn@immunoway.com
Support: support.cn@immunoway.com
Telephone: 400-8787-807(China)
Website: <http://www.immunoway.com.cn>
Address: 2200 Ringwood Ave San Jose, CA 95131 USA



Please scan the QR code
to access additional
product information:
PKHA1 Rabbit pAb

For Research Use Only. Not for Use in Diagnostic Procedures.

[Antibody](#) | [ELISA Kits](#) | [Protein](#) | [Reagents](#)