

SIAL Rabbit pAb

CatalogNo: YN2407

Key Features

Host Species

- Rabbit

Reactivity

- Human,Rat,Mouse

Applications

- WB,ELISA

MW

- 34kD (Observed)

Isotype

- IgG

Recommended Dilution Ratios

WB 1:500-2000**ELISA 1:5000-20000**

Storage

Storage*

-15°C to -25°C/1 year(Do not lower than -25°C)

Formulation

Liquid in PBS containing 50% glycerol, and 0.02% sodium azide.

Basic Information

Clonality

Polyclonal

Immunogen Information

Immunogen

Synthesized peptide derived from human protein . at AA range: 230-310

Specificity

SIAL Polyclonal Antibody detects endogenous levels of protein.

Target Information

Gene name

IBSP BNSP

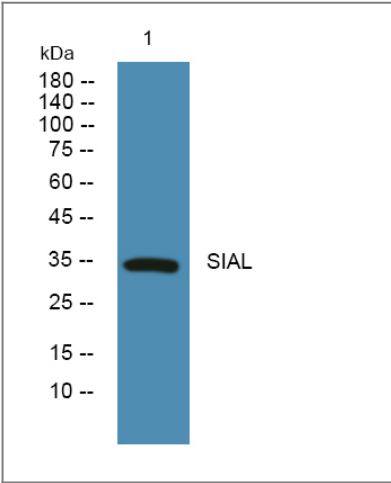
Protein Name Bone sialoprotein 2 (Bone sialoprotein II) (BSP II) (Cell-binding sialoprotein) (Integrin-binding sialoprotein)

Organism	Gene ID	UniProt ID
Human	3381 ;	P21815 ;
Mouse		Q61711 ;
Rat		P13839 ;

Cellular Localization Secreted.

Function Function: Binds tightly to hydroxyapatite. Appears to form an integral part of the mineralized matrix. Probably important to cell-matrix interaction. Promotes Arg-Gly-Asp-dependent cell attachment., miscellaneous: It is possible that the segments of clustered carboxyl groups mediate the strong binding to hydroxyapatite., PTM: N-glycosylated; glycans consist of sialated and core-fucosylated bi-, tri- and tetraantennary chains., PTM: O-glycosylated at eight sites; mucin-type glycans contain Gal, GlcNAc, GalNAc and terminal NeuAc., PTM: Sulfated on either Tyr-313 or Tyr-314.,

Validation Data



Western blot analysis of lysates from PC12 cells, primary antibody was diluted at 1:1000, 4° over night

Contact information

Orders: order.cn@immunoway.com
Support: support.cn@immunoway.com
Telephone: 400-8787-807(China)
Website: <http://www.immunoway.com.cn>
Address: 2200 Ringwood Ave San Jose, CA 95131 USA



Please scan the QR code to access additional product information:
SIAL Rabbit pAb

