

## SLAF6 Rabbit pAb

CatalogNo: YN2390

### Key Features

#### Host Species

- Rabbit

#### Reactivity

- Human, Mouse

#### Applications

- WB, ELISA

#### MW

- 36kD (Observed)

#### Isotype

- IgG

### Recommended Dilution Ratios

**WB 1:500-2000**

**ELISA 1:5000-20000**

### Storage

**Storage\*** -15°C to -25°C/1 year (Do not lower than -25°C)

**Formulation** Liquid in PBS containing 50% glycerol, and 0.02% sodium azide.

### Basic Information

**Clonality** Polyclonal

### Immunogen Information

**Immunogen** Synthesized peptide derived from human protein . at AA range: 20-100

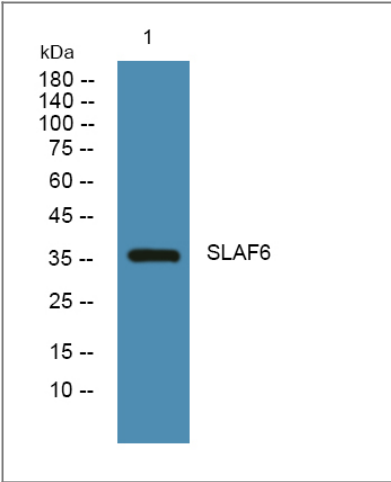
**Specificity** SLAF6 Polyclonal Antibody detects endogenous levels of protein.

### Target Information

**Gene name** SLAMF6 KALI UNQ6123/PRO20080

<b>Protein Name</b>	SLAM family member 6 (Activating NK receptor) (NK-T-B-antigen) (NTB-A) (CD antigen CD352)		
	<b>Organism</b>	<b>Gene ID</b>	<b>UniProt ID</b>
	Human	<a href="#">114836</a> ;	<a href="#">Q96DU3</a> ;
	Mouse		<a href="#">Q9ET39</a> ;
<b>Cellular Localization</b>	Cell membrane ; Single-pass type I membrane protein .		
<b>Tissue specificity</b>	Expressed by all (resting and activated) natural killer cells (NK), T- and B-lymphocytes (PubMed:11489943). Increased surface expression on T-cells of systemic lupus erythematosus (SLE) patients (PubMed:22184727).		
<b>Function</b>	Function:Triggers cytolytic activity only in natural killer cells (NK) expressing high surface densities of natural cytotoxicity receptors.,PTM:Phosphorylated.,similarity:Contains 1 Ig-like (immunoglobulin-like) domain.,subunit:Homodimer. Interacts with PTN6 and, upon phosphorylation, with PTN11 and SH2D1A/SAP.,tissue specificity:Expressed by all (resting and activated) natural killer cells (NK), T- and B-lymphocytes.,		

## Validation Data



Western blot analysis of lysates from PC12 cells, primary antibody was diluted at 1:1000, 4°over night

## Contact information

Orders: [order.cn@immunoway.com](mailto:order.cn@immunoway.com)  
 Support: [support.cn@immunoway.com](mailto:support.cn@immunoway.com)  
 Telephone: 400-8787-807(China)  
 Website: <http://www.immunoway.com.cn>  
 Address: 2200 Ringwood Ave San Jose, CA 95131 USA



Please scan the QR code  
 to access additional  
 product information:  
**SLAF6 Rabbit pAb**

