

## HECAM Rabbit pAb

CatalogNo: YN2377

Orthogonal Validated 

### Key Features

**Host Species**

- Rabbit

**Reactivity**

- Human, Mouse

**Applications**

- WB, ELISA

**MW**

- 45kD (Observed)

**Isotype**

- IgG

### Recommended Dilution Ratios

**WB 1:500-2000****ELISA 1:5000-20000**

### Storage

**Storage\*** -15°C to -25°C/1 year (Do not lower than -25°C)**Formulation** Liquid in PBS containing 50% glycerol, and 0.02% sodium azide.

### Basic Information

**Clonality** Polyclonal

### Immunogen Information

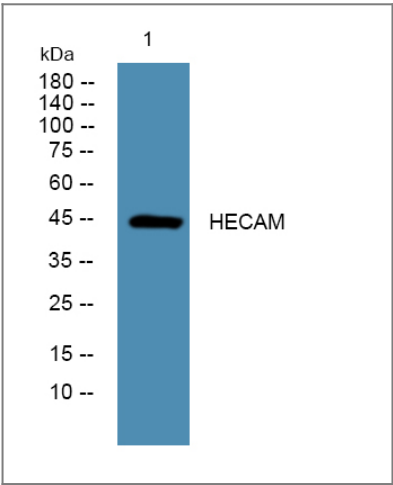
**Immunogen** Synthesized peptide derived from human protein . at AA range: 10-90**Specificity** HECAM Polyclonal Antibody detects endogenous levels of protein.

### Target Information

**Gene name** HEPACAM

<b>Protein Name</b>	Hepatocyte cell adhesion molecule (Protein hepaCAM)		
	<b>Organism</b>	<b>Gene ID</b>	<b>UniProt ID</b>
	Human	<a href="#">220296;</a>	<a href="#">Q14CZ8;</a>
	Mouse		<a href="#">Q640R3;</a>
<b>Cellular Localization</b>	Cytoplasm . Membrane; Single-pass type I membrane protein; Cytoplasmic side . In MCF-7 breast carcinoma and hepatic Hep 3B2.1-7 and Hep-G2 cell lines, localization of HEPACAM is cell density-dependent. In well spread cells, localized to punctate structures in the perinuclear membrane, cytoplasm, and at cell surface of protusions. In confluent cells, localized predominantly to the cytoplasmic membrane, particularly in areas of cell-cell contacts. Colocalizes with CDH1.		
<b>Tissue specificity</b>	Brain,Fetal brain,Hypothalamus,Liver,		
<b>Function</b>	Caution:Product of a dubious CDS prediction. Encoded by the 3'-UTR of HEPACAM.,Domain:The cytoplasmic domain plays an important role in regulation of cell-matrix adhesion and cell motility.,Function:Involved in regulating cell motility and cell-matrix interactions. May inhibit cell growth through suppression of cell proliferation.,induction:Down-regulated in 20 out of 23 of hepatocellular carcinoma (HCC) samples and is undetectable in 5 HCC cell lines tested.,PTM:N-glycosylated.,similarity:Contains 1 Ig-like C2-type (immunoglobulin-like) domain.,similarity:Contains 1 Ig-like V-type (immunoglobulin-like) domain.,subcellular location:In MCF7 breast carcinoma and hepatic Hep3B and HepG2 cell lines, localization of HEPACAM is cell density-dependent. In well spread cells, localized to punctate structures in the perinuclear membrane, cytoplasm, and at cell surface of protusions. In confluent cells, localized predominantly to the cytoplasmic membrane, particularly in areas of cell-cell contacts. Colocalizes with CDH1.,subunit:Homodimer. Dimer formation occurs predominantly through cis interactions on the cell surface.,tissue specificity:Expressed in liver. Expression is either downregulated or lost in hepatocellular carcinomas (HCC).,		

| Validation Data



Western blot analysis of lysates from HCT116 cells, primary antibody was diluted at 1:1000, 4°over night

| Contact information

Orders: order.cn@immunoway.com  
Support: support.cn@immunoway.com  
Telephone: 400-8787-807(China)  
Website: <http://www.immunoway.com.cn>  
Address: 2200 Ringwood Ave San Jose, CA 95131 USA



Please scan the QR code  
to access additional  
product information:  
**HECAM Rabbit pAb**

---

For Research Use Only. Not for Use in Diagnostic Procedures.

[Antibody](#) | [ELISA Kits](#) | [Protein](#) | [Reagents](#)