

CHIP Rabbit pAb

CatalogNo: YN2355

Key Features

Host Species

- Rabbit

Reactivity

- Human, Mouse

Applications

- WB, ELISA

MW

- 33kD (Observed)

Isotype

- IgG

Recommended Dilution Ratios

WB 1:500-2000

ELISA 1:5000-20000

Storage

Storage*

-15°C to -25°C/1 year (Do not lower than -25°C)

Formulation

Liquid in PBS containing 50% glycerol, and 0.02% sodium azide.

Basic Information

Clonality

Polyclonal

Immunogen Information

Immunogen

Synthesized peptide derived from human protein . at AA range: 160-240

Specificity

CHIP Polyclonal Antibody detects endogenous levels of protein.

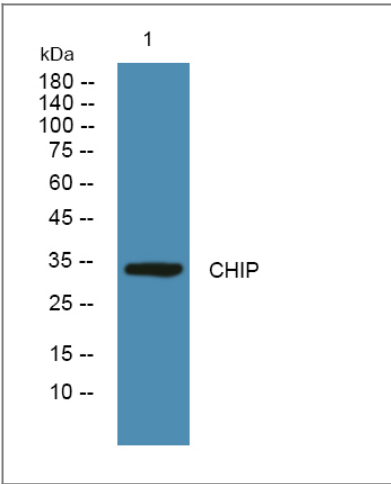
Target Information

Gene name

STUB1 CHIP PP1131

Protein Name	E3 ubiquitin-protein ligase CHIP (Antigen NY-CO-7) (CLL-associated antigen KW-8) (Carboxy terminus of Hsp70-interacting protein) (STIP1 homology and U box-containing protein 1)		
	Organism	Gene ID	UniProt ID
	Human	10273 ;	Q9UNE7 ;
	Mouse		Q9WUD1 ;
Cellular Localization	Cytoplasm . Nucleus . Translocates to the nucleus in response to inflammatory signals in regulatory T-cells (Treg). .		
Tissue specificity	Expressed in differentiated myotubes (at protein level) (PubMed:17369820). Highly expressed in skeletal muscle, heart, pancreas, brain and placenta (PubMed:10330192, PubMed:11435423). Detected in kidney, liver and lung (PubMed:10330192, PubMed:11435423).		
Function	Disease:Antibodies against STUB1 are found in patients with chronic lymphocytic leukemia (CLL) and in colorectal cancer patients.,Function:Modulates the activity of several chaperone complexes, including Hsp70, Hsc70 and Hsp90. Has E3 ubiquitin-protein ligase activity and targets misfolded chaperone substrates towards proteasomal degradation. Mediates transfer of non-canonical short ubiquitin chains to HSPA8 that have no effect on HSPA8 degradation.,PTM:Auto-ubiquitinated (in vitro).,PTM:Phosphorylated upon DNA damage, probably by ATM or ATR.,similarity:Contains 1 U-box domain.,similarity:Contains 3 TPR repeats.,subunit:Interacts with BAG2, and with the E2 ubiquitin conjugating enzymes UBE2D1, UBE2D2 and UBE2D3. Interacts with the C-terminal domains of HSPA8 and HSPA1A. Detected in a ternary complex containing STUB1, HSPA1A and HSPBP1.,tissue specificity:Highly expressed in skeletal muscle, heart, pancreas, brain and placenta. Detected in kidney, liver and lung.,		

Validation Data



Western blot analysis of lysates from PC12 cells, primary antibody was diluted at 1:1000, 4°over night

Contact information

Orders: order.cn@immunoway.com
Support: support.cn@immunoway.com
Telephone: 400-8787-807(China)
Website: <http://www.immunoway.com.cn>
Address: 2200 Ringwood Ave San Jose, CA 95131 USA



Please scan the QR code
to access additional
product information:
CHIP Rabbit pAb

For Research Use Only. Not for Use in Diagnostic Procedures.

[Antibody](#) | [ELISA Kits](#) | [Protein](#) | [Reagents](#)