

WNT2 Rabbit pAb

CatalogNo: YN2354

Key Features

Host Species

- Rabbit

Reactivity

- Human, Mouse

Applications

- WB, ELISA

MW

- 39kD (Observed)

Isotype

- IgG

Recommended Dilution Ratios

WB 1:500-2000

ELISA 1:5000-20000

Storage

Storage*

-15°C to -25°C/1 year (Do not lower than -25°C)

Formulation

Liquid in PBS containing 50% glycerol, 0.5% BSA and 0.02% sodium azide.

Basic Information

Clonality

Polyclonal

Immunogen Information

Immunogen

Synthesized peptide derived from human protein . at AA range: 200-280

Specificity

WNT2 Polyclonal Antibody detects endogenous levels of protein.

Target Information

Gene name

WNT2 INT1L1 IRP

Protein Name Protein Wnt-2 (Int-1-like protein 1) (Int-1-related protein) (IRP)

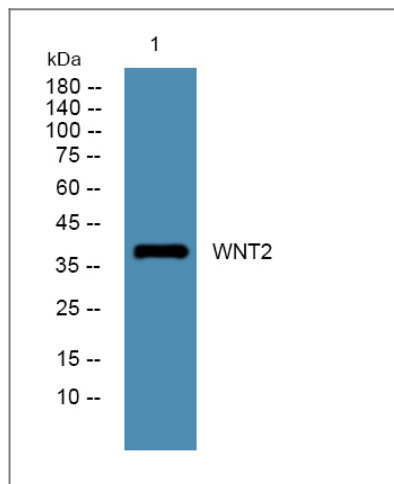
Organism	Gene ID	UniProt ID
Human	7472;	P09544;
Mouse		P21552;

Cellular Localization Secreted, extracellular space, extracellular matrix . Secreted .

Tissue specificity Expressed in brain in the thalamus, in fetal and adult lung and in placenta.

Function Function:Ligand for members of the frizzled family of seven transmembrane receptors.,Function:Ligand for members of the frizzled family of seven transmembrane receptors. Probable developmental protein. May be a signaling molecule which affects the development of discrete regions of tissues. Is likely to signal over only few cell diameters.,similarity:Belongs to the Wnt family.,tissue specificity:Expressed in brain in the thalamus, in fetal and adult lung and in placenta.,

Validation Data



Western blot analysis of lysates from K562 cells, primary antibody was diluted at 1:1000, 4°over night

Contact information

Orders: order.cn@immunoway.com
Support: support.cn@immunoway.com
Telephone: 400-8787-807(China)
Website: <http://www.immunoway.com.cn>
Address: 2200 Ringwood Ave San Jose, CA 95131 USA



Please scan the QR code to access additional product information:
WNT2 Rabbit pAb

