

## IGS11 Rabbit pAb

CatalogNo: YN2327

### Key Features

#### Host Species

- Rabbit

#### Reactivity

- Human,Rat,Mouse

#### Applications

- WB,ELISA

#### MW

- 47kD (Observed)

#### Isotype

- IgG

### Recommended Dilution Ratios

WB 1:500-2000

ELISA 1:5000-20000

### Storage

#### Storage\*

-15°C to -25°C/1 year(Do not lower than -25°C)

#### Formulation

Liquid in PBS containing 50% glycerol, and 0.02% sodium azide.

### Basic Information

#### Clonality

Polyclonal

### Immunogen Information

#### Immunogen

Synthesized peptide derived from human protein . at AA range: 110-190

#### Specificity

IGS11 Polyclonal Antibody detects endogenous levels of protein.

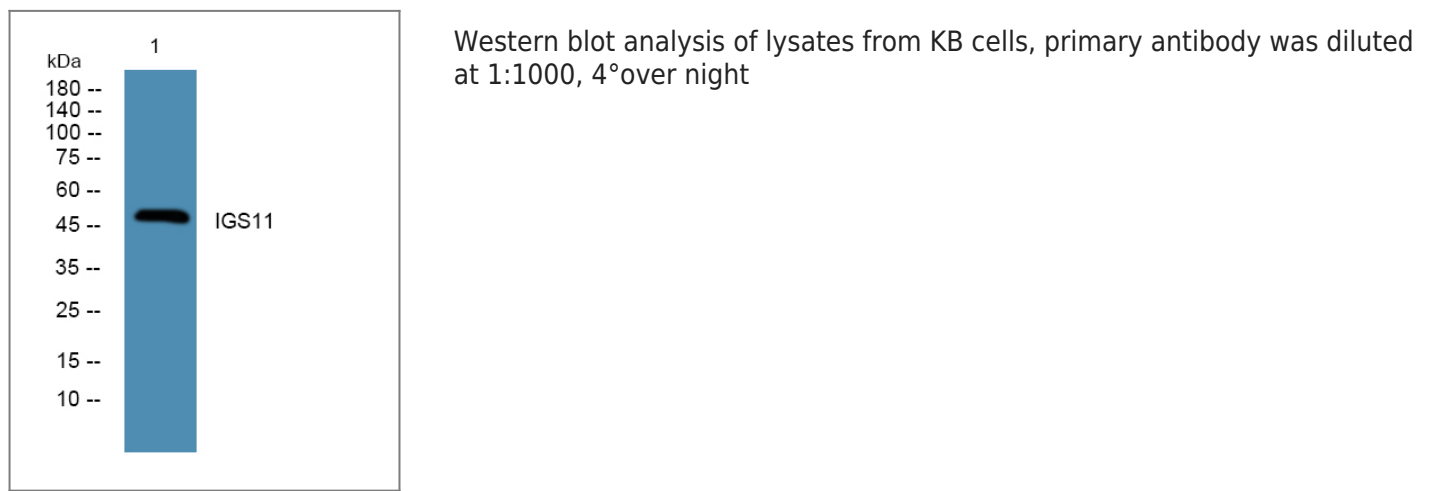
### Target Information

#### Gene name

IGSF11 BTIGSF CXADRL1 VSIG3

<b>Protein Name</b>	Immunoglobulin superfamily member 11 (IgSF11) (Brain and testis-specific immunoglobulin superfamily protein) (Bt-IGSF) (V-set and immunoglobulin domain-containing protein 3)		
	<b>Organism</b>	<b>Gene ID</b>	<b>UniProt ID</b>
	Human	<a href="#">152404;</a>	<a href="#">Q5DX21;</a>
	Mouse		<a href="#">P0C673;</a>
	Rat		<a href="#">Q5U2P2;</a>
<b>Cellular Localization</b>	Cell membrane ; Single-pass type I membrane protein .		
<b>Tissue specificity</b>	Abundantly expressed in testis and ovary and to a lower extent in brain, kidney and skeletal muscle.		
<b>Function</b>	Function:Functions as a cell adhesion molecule through homophilic interaction. Stimulates cell growth.,miscellaneous:The last 20 cytoplasmic amino-acids are not required for the cell adhesion function.,PTM:N-glycosylated.,similarity:Contains 1 Ig-like C2-type (immunoglobulin-like) domain.,similarity:Contains 1 Ig-like V-type (immunoglobulin-like) domain.,tissue specificity:Abundantly expressed in testis and ovary and to a lower extent in brain, kidney and skeletal muscle.,		

## Validation Data



## Contact information

Orders: [order.cn@immunoway.com](mailto:order.cn@immunoway.com)  
 Support: [support.cn@immunoway.com](mailto:support.cn@immunoway.com)  
 Telephone: 400-8787-807(China)  
 Website: <http://www.immunoway.com.cn>  
 Address: 2200 Ringwood Ave San Jose, CA 95131 USA



Please scan the QR code to access additional product information:  
**IGS11 Rabbit pAb**

