

HBEGF Rabbit pAb

CatalogNo: YN2310

Orthogonal Validated 

Key Features

Host Species

- Rabbit

Reactivity

- Human,Rat,Mouse

Applications

- WB,ELISA

MW

- 22kD (Observed)

Isotype

- IgG

Recommended Dilution Ratios

WB 1:500-2000**ELISA 1:5000-20000**

Storage

Storage* -15°C to -25°C/1 year(Do not lower than -25°C)**Formulation** Liquid in PBS containing 50% glycerol, 0.5% BSA and 0.02% sodium azide.

Basic Information

Clonality Polyclonal

Immunogen Information

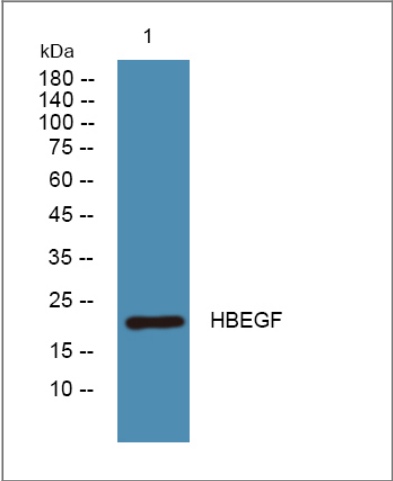
Immunogen Synthesized peptide derived from human protein . at AA range: 130-210**Specificity** HBEGF Polyclonal Antibody detects endogenous levels of protein.

Target Information

Gene name HBEGF DTR DTS HEGFL

Protein Name	Proheparin-binding EGF-like growth factor [Cleaved into: Heparin-binding EGF-like growth factor (HB-EGF) (HBEGF) (Diphtheria toxin receptor) (DT-R)]		
	Organism	Gene ID	UniProt ID
	Human	1839;	Q99075;
	Mouse		Q06186;
	Rat		Q06175;
Cellular Localization	[Heparin-binding EGF-like growth factor]: Secreted, extracellular space. Mature HB-EGF is released into the extracellular space and probably binds to a receptor.; [Proheparin-binding EGF-like growth factor]: Cell membrane; Single-pass type I membrane protein.		
Tissue specificity	Brain, Eye, Histiocytic lymphoma, Macrophage,		
Function	Function: May be involved in macrophage-mediated cellular proliferation. It is mitogenic for fibroblasts and smooth muscle but not endothelial cells. It is able to bind EGF receptors with higher affinity than EGF itself and is a far more potent mitogen for smooth muscle cells than EGF. Also acts as a diphtheria toxin receptor., PTM: O-linked glycan attachment sites were determined by Edman degradation, O-glycanase digest suggests mucin-type glycosylation (done in HB-EGF purified from histiocytic lymphoma cell line U-937)., PTM: Several N-termini have been identified by direct sequencing. The forms with N-termini 63, 73 and 74 have been tested and found to be biologically active., similarity: Contains 1 EGF-like domain., subcellular location: Mature HB-EGF is released into the extracellular space and probably binds to a receptor.,		

Validation Data



Western blot analysis of lysates from K562 cells, primary antibody was diluted at 1:1000, 4°over night

Contact information

Orders: order.cn@immunoway.com
Support: support.cn@immunoway.com
Telephone: 400-8787-807(China)
Website: <http://www.immunoway.com.cn>
Address: 2200 Ringwood Ave San Jose, CA 95131 USA



Please scan the QR code
to access additional
product information:
HBEGF Rabbit pAb

For Research Use Only. Not for Use in Diagnostic Procedures.

[Antibody](#) | [ELISA Kits](#) | [Protein](#) | [Reagents](#)