

## PRS27 Rabbit pAb

CatalogNo: YN2289

### Key Features

#### Host Species

- Rabbit

#### Reactivity

- Human,Rat,Mouse

#### Applications

- WB,ELISA

#### MW

- 31kD (Observed)

#### Isotype

- IgG

### Recommended Dilution Ratios

**WB 1:500-2000**

**ELISA 1:5000-20000**

### Storage

**Storage\*** -15°C to -25°C/1 year(Do not lower than -25°C)

**Formulation** Liquid in PBS containing 50% glycerol, 0.5% BSA and 0.02% sodium azide.

### Basic Information

**Clonality** Polyclonal

### Immunogen Information

**Immunogen** Synthesized peptide derived from human protein . at AA range: 30-110

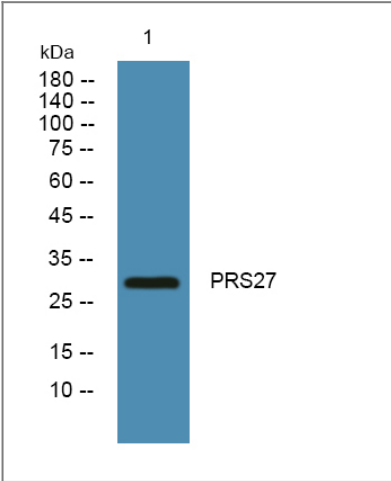
**Specificity** PRS27 Polyclonal Antibody detects endogenous levels of protein.

### Target Information

**Gene name** PRSS27 MPN UNQ1884/PRO4327

|                              |  |                        |                         |
|------------------------------|--|------------------------|-------------------------|
| <b>Protein Name</b>          | Serine protease 27 (Marapsin) (Pancreasin)   |                        |                         |
|                              | <b>Organism</b>  | <b>Gene ID</b>         | <b>UniProt ID</b>       |
|                              | Human  | <a href="#">83886;</a> | <a href="#">Q9BQR3;</a> |
|                              | Mouse  |                        | <a href="#">Q8BJR6;</a> |
|                              | Rat  |                        | <a href="#">Q6BEA2;</a> |
| <b>Cellular Localization</b> | Secreted.  |                        |                         |
| <b>Tissue specificity</b>    | Expressed predominantly in the pancreas.   |                        |                         |
| <b>Function</b>              | PTM:N-glycosylated.,similarity:Belongs to the peptidase S1 family.,similarity:Contains 1 peptidase S1 domain.,tissue specificity:Expressed predominantly in the pancreas., |                        |                         |

| Validation Data



Western blot analysis of lysates from K562 cells, primary antibody was diluted at 1:1000, 4°over night

| Contact information

Orders: order.cn@immunoway.com  
Support: support.cn@immunoway.com  
Telephone: 400-8787-807(China)  
Website: http://www.immunoway.com.cn  
Address: 2200 Ringwood Ave San Jose, CA 95131 USA



Please scan the QR code to access additional product information:  
**PRS27 Rabbit pAb**