

## TIM 3 Rabbit pAb

CatalogNo: YN2240

### Key Features

#### Host Species

- Rabbit

#### Reactivity

- Human, Mouse

#### Applications

- WB, ELISA

#### MW

- 33kD (Observed)

#### Isotype

- IgG

### Storage

**Storage\*** -15°C to -25°C/1 year (Do not lower than -25°C)

**Formulation** Liquid in PBS containing 50% glycerol, 0.5% BSA and 0.02% sodium azide.

### Recommended Dilution Ratios

**WB 1:500-2000**

**ELISA 1:5000-20000**

### Basic Information

**Clonality** Polyclonal

### Immunogen Information

**Immunogen** Synthesized peptide derived from human protein . at AA range: 10-90

**Specificity** HAVR2 Polyclonal Antibody detects endogenous levels of protein.

### Target Information

**Gene name** HAVCR2 TIM3 TIMD3

**Protein Name** Hepatitis A virus cellular receptor 2 (HAVcr-2) (T-cell immunoglobulin and mucin domain-containing protein 3) (TIMD-3) (T-cell membrane protein 3) (TIM-3)

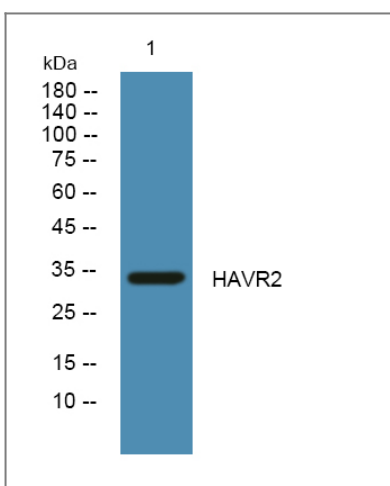
Organism	Gene ID	UniProt ID
Human	<a href="#">84868;</a>	<a href="#">Q8TDQ0;</a>
Mouse		<a href="#">Q8VIM0;</a>

**Cellular Localization** Membrane ; Single-pass type I membrane protein . Cell junction . Cell membrane . Localizes to the immunological synapse between CD8+ T-cells and target cells. .

**Tissue specificity** Expressed in T-helper type 1 (Th1) lymphocytes. Expressed on regulatory T (Treg) cells after TCR stimulation. Expressed in dendritic cells and natural killer (NK) cells. Expressed in epithelial tissues. Expression is increased on CD4+ and CD8+ T-cells in chronic hepatitis C virus (HCV) infection. In progressive HIV-1 infection , expression is up-regulated on HIV-1-specific CD8 T-cells.

**Function** Disease:Genetic variation in HAVCR2 may influence susceptibility to rheumatoid arthritis (RA) [MIM:180300]. RA is an inflammatory disease , primarily of the joints , with autoimmune features and a complex genetic component. It is characterized by inflammation of synovial tissues and the formation of rheumatoid pannus , which is capable of eroding adjacent cartilage and bone , causing subsequent joint destruction. ,Function:Regulates macrophage activation. Inhibits T-helper type 1 lymphocyte (Th1) - mediated auto- and alloimmune responses and promotes immunological tolerance. May be also involved in T-cell homing. Receptor for LGALS9. ,similarity:Belongs to the immunoglobulin superfamily. TIM family. ,similarity:Contains 1 Ig-like V-type (immunoglobulin-like) domain. ,tissue specificity:T-helper type 1 lymphocyte (Th1) -specific.

## Validation Data



Western blot analysis of lysates from K562 cells, primary antibody was diluted at 1:1000, 4°C over night

## Contact information

Orders: order.cn@immunoway.com  
Support: support.cn@immunoway.com  
Telephone: 400-8787-807(China)  
Website: <http://www.immunoway.com.cn>  
Address: 2200 Ringwood Ave San Jose, CA 95131 USA



Please scan the QR code  
to access additional  
product information:  
**TIM 3 Rabbit pAb**

---

For Research Use Only. Not for Use in Diagnostic Procedures.

[Antibody](#) | [ELISA Kits](#) | [Protein](#) | [Reagents](#)