

RAP1B Rabbit pAb

CatalogNo: YN2237

Key Features

Host Species

- Rabbit

Reactivity

- Human,Rat,Mouse

Applications

- WB,ELISA

MW

- 20kD (Observed)

Isotype

- IgG

Recommended Dilution Ratios

WB 1:500-2000

ELISA 1:5000-20000

Storage

Storage*

-15°C to -25°C/1 year(Do not lower than -25°C)

Formulation

Liquid in PBS containing 50% glycerol, and 0.02% sodium azide.

Basic Information

Clonality

Polyclonal

Immunogen Information

Immunogen

Synthesized peptide derived from human protein . at AA range: 110-190

Specificity

RAP1B Polyclonal Antibody detects endogenous levels of protein.

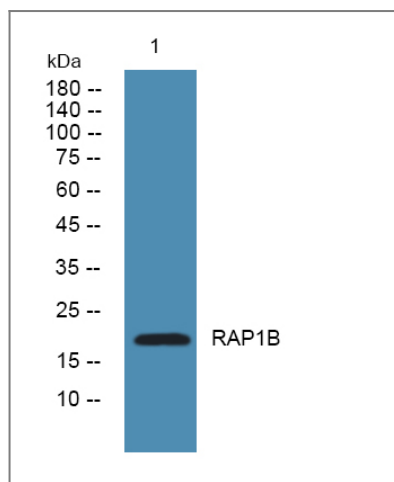
Target Information

Gene name

RAP1B OK/SW-cl.11

Protein Name	Ras-related protein Rap-1b (GTP-binding protein smg p21B)		
	Organism	Gene ID	UniProt ID
	Human	5908;	P61224;
	Mouse		Q99JL6;
	Rat		Q62636;
Cellular Localization	Cell membrane . Cytoplasm, cytosol . Cell junction . May shuttle between plasma membrane and cytosol (PubMed:3141412). Presence of KRIT1 and CDH5 is required for its localization to the cell junction (PubMed:20332120). .		
Tissue specificity	Amygdala,Brain,Chondrosarcoma,Colon adenocarcinoma,Placenta,Platele		
Function	enzyme regulation:Activated by guanine nucleotide-exchange factor (GEF) EPAC2 in a cAMP-dependent manner.,similarity:Belongs to the small GTPase superfamily. Ras family.,subcellular location:May shuttle between plasma membrane and cytosol.,subunit:Interacts with SGSM1, SGSM2 and SGSM3.,		

Validation Data



Western blot analysis of lysates from A431 cells, primary antibody was diluted at 1:1000, 4°over night

Contact information

Orders: order.cn@immunoway.com
 Support: support.cn@immunoway.com
 Telephone: 400-8787-807(China)
 Website: <http://www.immunoway.com.cn>
 Address: 2200 Ringwood Ave San Jose, CA 95131 USA



Please scan the QR code to access additional product information:
RAP1B Rabbit pAb

