

VSIG4 Rabbit pAb

CatalogNo: YN2235

Key Features

Host Species

- Rabbit

Reactivity

- Human

Applications

- WB, ELISA

MW

- 43kD (Observed)

Isotype

- IgG

Recommended Dilution Ratios

WB 1:500-2000

ELISA 1:5000-20000

Storage

Storage*

-15°C to -25°C/1 year(Do not lower than -25°C)

Formulation

Liquid in PBS containing 50% glycerol, 0.5% BSA and 0.02% sodium azide.

Basic Information

Clonality

Polyclonal

Immunogen Information

Immunogen

Synthesized peptide derived from human protein . at AA range: 70-150

Specificity

VSIG4 Polyclonal Antibody detects endogenous levels of protein.

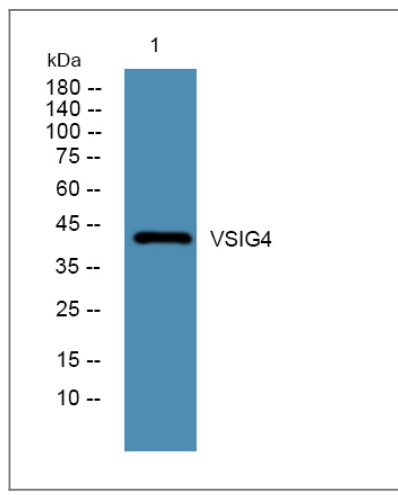
Target Information

Gene name

VSIG4 CRlg Z39IG UNQ317/PRO362

Protein Name	V-set and immunoglobulin domain-containing protein 4 (Protein Z39lg)		
	Organism	Gene ID	UniProt ID
	Human	11326 ;	Q9Y279 ;
Cellular Localization	Membrane ; Single-pass type I membrane protein .		
Tissue specificity	Abundantly expressed in several fetal tissues. In adult tissues, highest expression in lung and placenta. Expressed in resting macrophages.		
Function	Function:Phagocytic receptor, strong negative regulator of T-cell proliferation and IL2 production. Potent inhibitor of the alternative complement pathway convertases.,similarity:Contains 2 Ig-like (immunoglobulin-like) domains.,tissue specificity:Abundantly expressed in several fetal tissues. In adult tissues, highest expression in lung and placenta. Expressed in resting macrophages.,		

Validation Data



Western blot analysis of lysates from Jurkat cells, primary antibody was diluted at 1:1000, 4° over night

Contact information

Orders: order.cn@immunoway.com
 Support: support.cn@immunoway.com
 Telephone: 400-8787-807(China)
 Website: <http://www.immunoway.com.cn>
 Address: 2200 Ringwood Ave San Jose, CA 95131 USA



Please scan the QR code
 to access additional
 product information:
VSIG4 Rabbit pAb