

## MCEM1 Rabbit pAb

CatalogNo: YN2219

### Key Features

#### Host Species

- Rabbit

#### Reactivity

- Human, Mouse

#### Applications

- WB, ELISA

#### MW

- 20kD (Observed)

#### Isotype

- IgG

### Recommended Dilution Ratios

WB 1:500-2000

ELISA 1:5000-20000

### Storage

#### Storage\*

-15°C to -25°C/1 year (Do not lower than -25°C)

#### Formulation

Liquid in PBS containing 50% glycerol, 0.5% BSA and 0.02% sodium azide.

### Basic Information

#### Clonality

Polyclonal

### Immunogen Information

#### Immunogen

Synthesized peptide derived from human protein . at AA range: 90-170

#### Specificity

MCEM1 Polyclonal Antibody detects endogenous levels of protein.

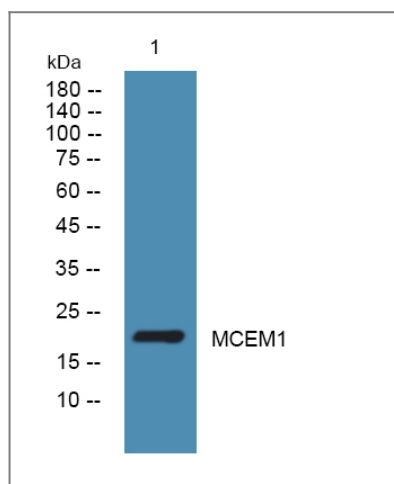
### Target Information

#### Gene name

MCEMP1 C19orf59

<b>Protein Name</b>	Mast cell-expressed membrane protein 1		
	<b>Organism</b>	<b>Gene ID</b>	<b>UniProt ID</b>
	Human	<a href="#">199675;</a>	<a href="#">Q8IX19;</a>
	Mouse		<a href="#">Q9D8U6;</a>
<b>Cellular Localization</b>	Membrane; Single-pass type II membrane protein.		
<b>Tissue specificity</b>	Expressed specifically in mast cells. Found primarily in lung.		
<b>Function</b>	tissue specificity:Expressed specifically in mast cells. Found primarily in lung.,		

## Validation Data



Western blot analysis of lysates from U2OS cells, primary antibody was diluted at 1:1000, 4°over night

## Contact information

Orders: [order.cn@immunoway.com](mailto:order.cn@immunoway.com)  
 Support: [support.cn@immunoway.com](mailto:support.cn@immunoway.com)  
 Telephone: 400-8787-807(China)  
 Website: <http://www.immunoway.com.cn>  
 Address: 2200 Ringwood Ave San Jose, CA 95131 USA



Please scan the QR code to access additional product information:  
**MCEM1 Rabbit pAb**