

PORIM Rabbit pAb

CatalogNo: YN2175

Key Features

Host Species

- Rabbit

Reactivity

- Human,Rat,Mouse

Applications

- WB,ELISA

MW

- 22kD (Observed)

Isotype

- IgG

Recommended Dilution Ratios

WB 1:500-2000

ELISA 1:5000-20000

Storage

Storage*

-15°C to -25°C/1 year(Do not lower than -25°C)

Formulation

Liquid in PBS containing 50% glycerol, 0.5% BSA and 0.02% sodium azide.

Basic Information

Clonality

Polyclonal

Immunogen Information

Immunogen

Synthesized peptide derived from part region of human protein

Specificity

PORIM Polyclonal Antibody detects endogenous levels of protein.

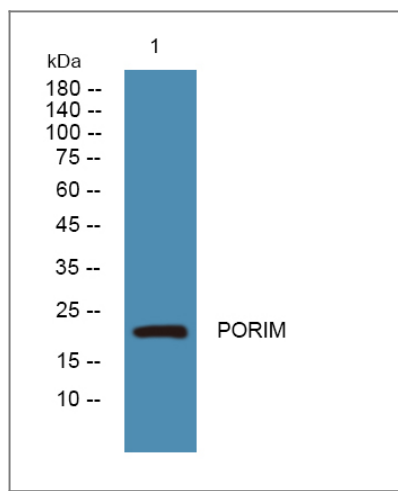
Target Information

Gene name

TMEM123 KCT3 PSEC0111 UNQ641/PRO1271

Protein Name	Porimin (Keratinocytes-associated transmembrane protein 3) (KCT-3) (Pro-oncosis receptor inducing membrane injury) (Transmembrane protein 123)		
	Organism	Gene ID	UniProt ID
	Human	114908;	Q8N131;
	Mouse		Q91Z22;
	Rat		Q5HZB0;
Cellular Localization	Membrane ; Single-pass type I membrane protein .		
Tissue specificity	Ubiquitous. Not expressed in ovary. Expressed in keratinocytes.		
Function	Function:Implicated in oncotic cell death, characterized by cell swelling, organelle swelling, vacuolization and increased membrane permeability.,similarity:Belongs to the CD164 family.,tissue specificity:Ubiquitous. Not expressed in ovary. Expressed in keratinocytes.,		

| Validation Data



Western blot analysis of lysates from PC12 cells, primary antibody was diluted at 1:1000, 4°over night

| Contact information

Orders: order.cn@immunoway.com
 Support: support.cn@immunoway.com
 Telephone: 400-8787-807(China)
 Website: <http://www.immunoway.com.cn>
 Address: 2200 Ringwood Ave San Jose, CA 95131 USA



Please scan the QR code
 to access additional
 product information:
PORIM Rabbit pAb

