

SPIT2 Rabbit pAb

CatalogNo: YN2152

Key Features

Host Species

- Rabbit

Reactivity

- Human, Mouse

Applications

- WB, ELISA

MW

- 27kD (Observed)

Isotype

- IgG

Recommended Dilution Ratios

WB 1:500-2000

ELISA 1:5000-20000

Storage

Storage*

-15°C to -25°C/1 year (Do not lower than -25°C)

Formulation

Liquid in PBS containing 50% glycerol, 0.5% BSA and 0.02% sodium azide.

Basic Information

Clonality

Polyclonal

Immunogen Information

Immunogen

Synthesized peptide derived from part region of human protein

Specificity

SPIT2 Polyclonal Antibody detects endogenous levels of protein.

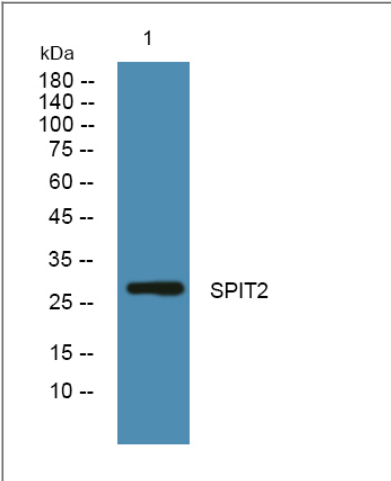
Target Information

Gene name

SPINT2 HAI2 KOP

Protein Name	Kunitz-type protease inhibitor 2 (Hepatocyte growth factor activator inhibitor type 2) (HAI-2) (Placental bikunin)		
	Organism	Gene ID	UniProt ID
	Human	10653 ;	O43291 ;
	Mouse		Q9WU03 ;
Cellular Localization	Membrane ; Single-pass type I membrane protein .		
Tissue specificity	Expressed in placenta, kidney, pancreas, prostate, testis, thymus, and trachea.		
Function	Domain:This inhibitor contains two inhibitory domains.,Function:Inhibitor of HGF activator. Also inhibits plasmin, plasma and tissue kallikrein, and factor XIa.,similarity:Contains 1 BPTI/Kunitz inhibitor domain.,similarity:Contains 2 BPTI/Kunitz inhibitor domains.,tissue specificity:Expressed in placenta, kidney, pancreas, prostate, testis, thymus, and trachea.,		

| Validation Data



Western blot analysis of lysates from K562 cells, primary antibody was diluted at 1:1000, 4°over night

| Contact information

Orders: order.cn@immunoway.com
Support: support.cn@immunoway.com
Telephone: 400-8787-807(China)
Website: http://www.immunoway.com.cn
Address: 2200 Ringwood Ave San Jose, CA 95131 USA



Please scan the QR code to access additional product information:
SPIT2 Rabbit pAb