

## KLK5 Rabbit pAb

CatalogNo: YN2151

### Key Features

#### Host Species

- Rabbit

#### Reactivity

- Human

#### Applications

- WB,ELISA

#### MW

- 32kD (Observed)

#### Isotype

- IgG

### Storage

**Storage\*** -15°C to -25°C/1 year(Do not lower than -25°C)

**Formulation** Liquid in PBS containing 50% glycerol, 0.5% BSA and 0.02% sodium azide.

### Recommended Dilution Ratios

**WB 1:500-2000**

**ELISA 1:5000-20000**

### Basic Information

**Clonality** Polyclonal

### Immunogen Information

**Immunogen** Synthesized peptide derived from part region of human protein. AA range:36-136

**Specificity** KLK5 Polyclonal Antibody detects endogenous levels of protein.

### Target Information

**Gene name** KLK5 SCTE UNQ570/PRO1132

**Protein Name** Kallikrein-5 (Kallikrein-like protein 2) (KLK-L2) (Stratum corneum tryptic enzyme)

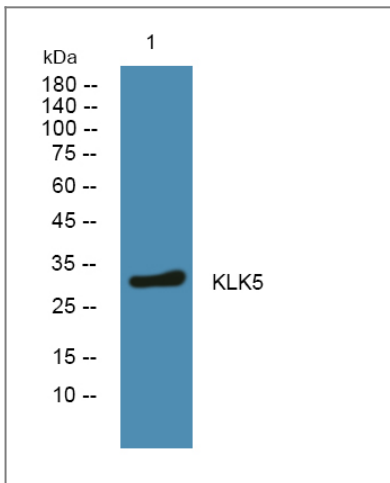
Organism	Gene ID	UniProt ID
Human	<a href="#">25818</a> ;	<a href="#">Q9Y337</a> ;

**Cellular Localization** Secreted.

**Tissue specificity** Expressed in skin, breast, brain and testis. Expressed at the stratum granulosum of palmar skin.

**Function** Function:May be involved in desquamation.,similarity:Belongs to the peptidase S1 family.,similarity:Belongs to the peptidase S1 family. Kallikrein subfamily.,similarity:Contains 1 peptidase S1 domain.,tissue specificity:Expressed in skin, breast, brain and testis.,

## Validation Data



Western blot analysis of lysates from DU145 cells, primary antibody was diluted at 1:1000, 4° over night

## Contact information

Orders: [order.cn@immunoway.com](mailto:order.cn@immunoway.com)  
Support: [support.cn@immunoway.com](mailto:support.cn@immunoway.com)  
Telephone: 400-8787-807(China)  
Website: <http://www.immunoway.com.cn>  
Address: 2200 Ringwood Ave San Jose, CA 95131 USA



Please scan the QR code to access additional product information:  
**KLK5 Rabbit pAb**