

Methionyl Aminopeptidase 1 Rabbit pAb

CatalogNo: YN2148

Key Features

Host Species

- Rabbit

Reactivity

- Human, Mouse

Applications

- WB, ELISA

MW

- 42kD (Observed)

Isotype

- IgG

Recommended Dilution Ratios

WB 1:500-2000

ELISA 1:5000-20000

Storage

Storage*

-15°C to -25°C/1 year (Do not lower than -25°C)

Formulation

Liquid in PBS containing 50% glycerol, 0.5% BSA and 0.02% sodium azide.

Basic Information

Clonality

Polyclonal

Immunogen Information

Immunogen

Synthesized peptide derived from part region of human protein

Specificity

AMPM1 Polyclonal Antibody detects endogenous levels of protein.

Target Information

Gene name

METAP1 KIAA0094

Protein Name Methionine aminopeptidase 1 (MAP 1) (MetAP 1) (Peptidase M 1)

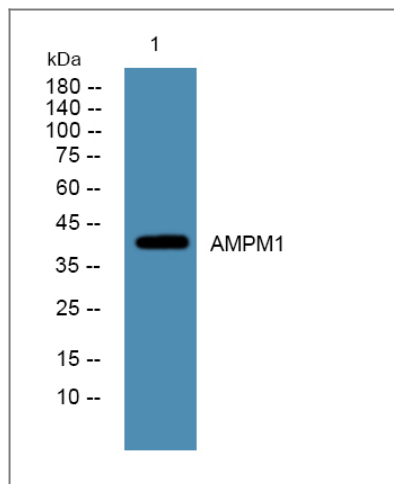
Organism	Gene ID	UniProt ID
Human	23173;	P53582;
Mouse		Q8BP48;

Cellular Localization Cytoplasm .

Tissue specificity Bone marrow,Placenta,Testis,

Function Catalytic activity:Release of N-terminal amino acids, preferentially methionine, from peptides and arylamides.,cofactor:Binds 1 sodium ion per subunit. The sodium ion has a structural role.,cofactor:Binds 2 cobalt ions per subunit.,cofactor:Binds 2 cobalt ions per subunit. The true nature of the physiological cofactor is under debate. The enzyme is also active with zinc, manganese or divalent iron ions.,Function:Removes the amino-terminal methionine from nascent proteins.,Function:Removes the amino-terminal methionine from nascent proteins. Required for normal progression through the cell cycle.,similarity:Belongs to the peptidase M24A family.,

Validation Data



Western blot analysis of lysates from K562 cells, primary antibody was diluted at 1:1000, 4° over night

Contact information

Orders: order.cn@immunoway.com
Support: support.cn@immunoway.com
Telephone: 400-8787-807(China)
Website: <http://www.immunoway.com.cn>
Address: 2200 Ringwood Ave San Jose, CA 95131 USA



Please scan the QR code to access additional product information:
**Methionyl
Aminopeptidase 1
Rabbit pAb**

