

## RETNB Rabbit pAb

CatalogNo: YN2134

### Key Features

#### Host Species

- Rabbit

#### Reactivity

- Human, Mouse

#### Applications

- WB, ELISA

#### MW

- 12kD (Observed)

#### Isotype

- IgG

### Recommended Dilution Ratios

WB 1:500-2000

ELISA 1:5000-20000

### Storage

#### Storage\*

-15°C to -25°C/1 year (Do not lower than -25°C)

#### Formulation

Liquid in PBS containing 50% glycerol, 0.5% BSA and 0.02% sodium azide.

### Basic Information

#### Clonality

Polyclonal

### Immunogen Information

#### Immunogen

Synthesized peptide derived from part region of human protein AA range: 1-50

#### Specificity

RETNB Polyclonal Antibody detects endogenous levels of protein.

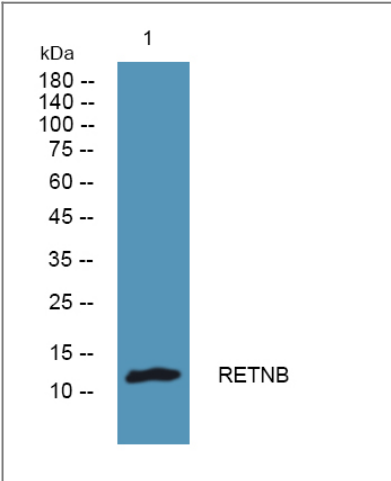
### Target Information

#### Gene name

RETNLB CCRG FIZZ2 HXCP2 RETNL2 UNQ408/PRO770

<b>Protein Name</b>	Resistin-like beta (Colon and small intestine-specific cysteine-rich protein) (Colon carcinoma-related gene protein) (Cysteine-rich secreted protein A12-alpha-like 1) (Cysteine-rich secreted protein FIZZ2) (RELMbeta)		
	<b>Organism</b>	<b>Gene ID</b>	<b>UniProt ID</b>
	Human	<a href="#">84666;</a>	<a href="#">Q9BQ08;</a>
	Mouse		<a href="#">Q99P86;</a>
<b>Cellular Localization</b>	Secreted.		
<b>Tissue specificity</b>	Expressed only in the gastrointestinal tract, particularly the colon.		
<b>Function</b>	Function:Probable hormone.,similarity:Belongs to the resistin/FIZZ family.,subunit:Homodimer; disulfide-linked.,tissue specificity:Expressed only in the gastrointestinal tract, particularly the colon.,		

| Validation Data



Western blot analysis of lysates from K562 cells, primary antibody was diluted at 1:1000, 4°over night

| Contact information

Orders: order.cn@immunoway.com  
Support: support.cn@immunoway.com  
Telephone: 400-8787-807(China)  
Website: http://www.immunoway.com.cn  
Address: 2200 Ringwood Ave San Jose, CA 95131 USA



Please scan the QR code to access additional product information:  
**RETNB Rabbit pAb**