

PTPRM Rabbit pAb

CatalogNo: YN2112

Orthogonal Validated 

Key Features

Host Species

- Rabbit

Reactivity

- Human, Mouse

Applications

- WB, ELISA

MW

- 159kD (Observed)

Isotype

- IgG

Recommended Dilution Ratios

WB 1:500-2000

ELISA 1:5000-20000

Storage

Storage* -15°C to -25°C/1 year (Do not lower than -25°C)**Formulation** Liquid in PBS containing 50% glycerol, 0.5% BSA and 0.02% sodium azide.

Basic Information

Clonality Polyclonal

Immunogen Information

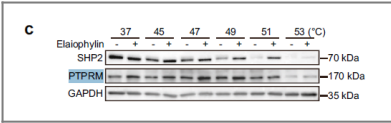
Immunogen Synthesized peptide derived from part region of human protein. AA range 21-61**Specificity** PTPRM Polyclonal Antibody detects endogenous levels of protein.

Target Information

Gene name PTPRM PTPRL1

Protein Name	Receptor-type tyrosine-protein phosphatase mu (Protein-tyrosine phosphatase mu) (R-PTP-mu) (EC 3.1.3.48)		
	Organism	Gene ID	UniProt ID
	Human	5797;	P28827;
	Mouse		P28828;
Cellular Localization	Cell membrane ; Single-pass type I membrane protein. Localizes in regions of cell-cell contact. .		
Tissue specificity	Brain,Clones donated by RIKEN,Plasma,Testis,		
Function	Catalytic activity:Protein tyrosine phosphate + H(2)O = protein tyrosine + phosphate.,Function:Involved in cell-cell adhesion through homophilic interactions. May play a key role in signal transduction and growth control.,similarity:Belongs to the protein-tyrosine phosphatase family. Receptor class 2B subfamily.,similarity:Contains 1 Ig-like C2-type (immunoglobulin-like) domain.,similarity:Contains 1 MAM domain.,similarity:Contains 1 tyrosine-protein phosphatase domain.,similarity:Contains 2 tyrosine-protein phosphatase domains.,similarity:Contains 4 fibronectin type-III domains.,		

Validation Data



Elaiophylin triggers paraptosis and preferentially kills ovarian cancer drug-resistant cells by inducing MAPK hyperactivation Signal Transduction and Targeted Therapy Yong Fang WB Human

Contact information

Orders:

order.cn@immunoway.com

Support:

support.cn@immunoway.com

Telephone:

400-8787-807(China)

Website:

http://www.immunoway.com.cn

Address:

2200 Ringwood Ave San Jose, CA 95131 USA



Please scan the QR code to access additional product information: **PTPRM Rabbit pAb**

For Research Use Only. Not for Use in Diagnostic Procedures.

Antibody | ELISA Kits | Protein | Reagents