

CLC7A Rabbit pAb

CatalogNo: YN2088

Key Features

Host Species

- Rabbit

Reactivity

- Human, Mouse

Applications

- WB, ELISA

MW

- 27kD (Observed)

Isotype

- IgG

Recommended Dilution Ratios

WB 1:500-2000

ELISA 1:5000-20000

Storage

Storage*

-15°C to -25°C/1 year (Do not lower than -25°C)

Formulation

Liquid in PBS containing 50% glycerol, 0.5% BSA and 0.02% sodium azide.

Basic Information

Clonality

Polyclonal

Immunogen Information

Immunogen

Synthesized peptide derived from part region of human protein

Specificity

CLC7A Polyclonal Antibody detects endogenous levels of protein.

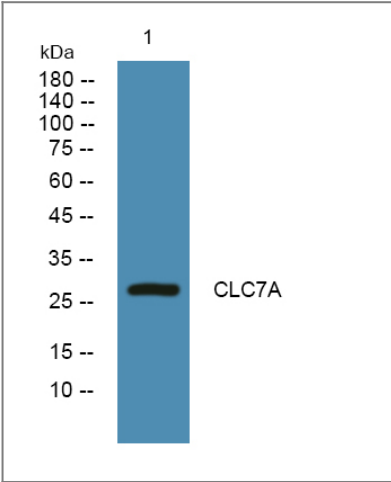
Target Information

Gene name

CLEC7A BGR CLECSF12 DECTIN1 UNQ539/PRO1082

Protein Name	C-type lectin domain family 7 member A (Beta-glucan receptor) (C-type lectin superfamily member 12) (Dendritic cell-associated C-type lectin 1) (DC-associated C-type lectin 1) (Dectin-1)		
	Organism	Gene ID	UniProt ID
	Human	64581 ;	Q9BXN2 ;
	Mouse		Q6QLQ4 ;
Cellular Localization	Cell membrane ; Single-pass type II membrane protein .; [Isoform 5]: Cytoplasm .; [Isoform 6]: Cytoplasm .; [Isoform 7]: Cytoplasm .		
Tissue specificity	Highly expressed in peripheral blood leukocytes and dendritic cells. Detected in spleen, bone marrow, lung, muscle, stomach and placenta.		
Function	Function:Lectin that functions as pattern receptor specific for beta-1,3-linked and beta-1,6-linked glucans, such as cell wall constituents from pathogenic bacteria and fungi. Necessary for the TLR2-mediated inflammatory response and for TLR2-mediated activation of NF-kappa-B. Enhances cytokine production in macrophages and dendritic cells. Mediates production of reactive oxygen species in the cell. Mediates phagocytosis of C.albicans conidia. Binds T-cells in a way that does not involve their surface glycans and plays a role in T-cell activation. Stimulates T-cell proliferation.,induction:Up-regulated during differentiation from monocytes into dendritic cells.,PTM:Phosphorylated on tyrosine residues in response to glucan binding.,similarity:Contains 1 C-type lectin domain.,subunit:Isoform 5 interacts with RANBP9.,tissue specificity:Highly expressed in peripheral blood leukocytes and dendritic cells. Detected in spleen, bone marrow, lung, muscle, stomach and placenta.,		

Validation Data



Western blot analysis of lysates from SW480 cells, primary antibody was diluted at 1:1000, 4°over night

Contact information

Orders: order.cn@immunoway.com
Support: support.cn@immunoway.com
Telephone: 400-8787-807(China)
Website: <http://www.immunoway.com.cn>
Address: 2200 Ringwood Ave San Jose, CA 95131 USA



Please scan the QR code
to access additional
product information:
CLC7A Rabbit pAb

For Research Use Only. Not for Use in Diagnostic Procedures.

[Antibody](#) | [ELISA Kits](#) | [Protein](#) | [Reagents](#)