

GBX2 Rabbit pAb

CatalogNo: YN2083

Key Features

Host Species

- Rabbit

Reactivity

- Human, Mouse

Applications

- WB, ELISA

MW

- 38kD (Observed)

Isotype

- IgG

Recommended Dilution Ratios

WB 1:500-2000

ELISA 1:5000-20000

Storage

Storage*

-15°C to -25°C/1 year (Do not lower than -25°C)

Formulation

Liquid in PBS containing 50% glycerol, and 0.02% sodium azide.

Basic Information

Clonality

Polyclonal

Immunogen Information

Immunogen

Synthesized peptide derived from part region of human protein

Specificity

GBX2 Polyclonal Antibody detects endogenous levels of protein.

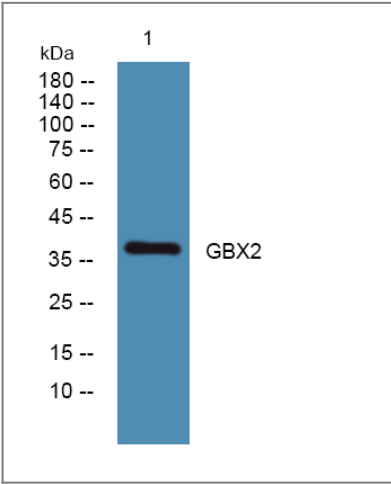
Target Information

Gene name

GBX2

Protein Name	Homeobox protein GBX-2 (Gastrulation and brain-specific homeobox protein 2)		
	Organism	Gene ID	UniProt ID
	Human	2637 ;	P52951 ;
	Mouse		P48031 ;
Cellular Localization	Nucleus .		
Tissue specificity	Brain,		
Function	Function:May act as a transcription factor for cell pluripotency and differentiation in the embryo.,similarity:Contains 1 homeobox DNA-binding domain.,		

| Validation Data



Western blot analysis of lysates from K562 cells, primary antibody was diluted at 1:1000, 4°over night

| Contact information

Orders: order.cn@immunoway.com
Support: support.cn@immunoway.com
Telephone: 400-8787-807(China)
Website: http://www.immunoway.com.cn
Address: 2200 Ringwood Ave San Jose, CA 95131 USA



Please scan the QR code to access additional product information:
GBX2 Rabbit pAb