

FKBP1B Rabbit pAb

CatalogNo: YN2064

Key Features

Host Species

- Rabbit

Reactivity

- Human, Mouse, Rat

Applications

- WB, ELISA

MW

- 11kD (Observed)

Isotype

- IgG

Recommended Dilution Ratios

WB 1:500-2000

ELISA 1:5000-20000

Storage

Storage*

-15°C to -25°C/1 year (Do not lower than -25°C)

Formulation

Liquid in PBS containing 50% glycerol, 0.5% BSA and 0.02% sodium azide.

Basic Information

Clonality

Polyclonal

Immunogen Information

Immunogen

Synthesized peptide derived from part region of human protein AA range: 1-50

Specificity

FKBP1B Polyclonal Antibody detects endogenous levels of protein.

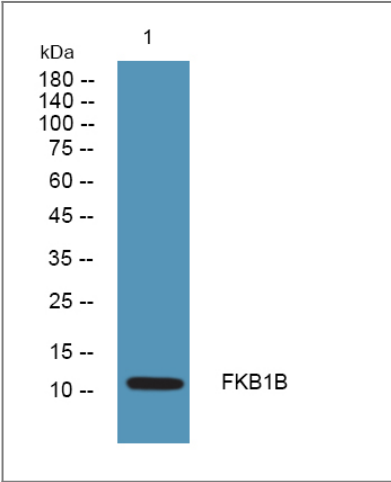
Target Information

Gene name

FKBP1B FKBP12.6 FKBP1L FKBP9 OTK4

Protein Name	Peptidyl-prolyl cis-trans isomerase FKBP1B (PPlase FKBP1B) (12.6 kDa FK506-binding protein) (12.6 kDa FKBP) (FKBP-12.6) (FK506-binding protein 1B) (FKBP-1B) (Immunophilin FKBP12.6) (Rotamase) (h-FKBP-12)		
	Organism	Gene ID	UniProt ID
	Human	2281 ;	P68106 ;
	Mouse		Q9Z2I2 ;
	Rat		P97534 ;
Cellular Localization	Cytoplasm . Sarcoplasmic reticulum .		
Tissue specificity	Detected in heart muscle (at protein level). Isoform 1 and isoform 2 are ubiquitous with highest levels in brain and thymus.		
Function	Catalytic activity:Peptidylproline (omega=180) = peptidylproline (omega=0).,enzyme regulation:Inhibited by both FK506 and rapamycin.,Function:Associates with the ryanodine receptor (RYR-2) in cardiac muscle sarcoplasmic reticulum and may play a unique physiological role in excitation-contraction coupling in cardiac muscle. There are four molecules of FKBP12.6 per heart muscle RYR. Has the potential to contribute to the immunosuppressive and toxic effects of FK506 and rapamycin. PPlases accelerate the folding of proteins. It catalyzes the cis-trans isomerization of proline imidic peptide bonds in oligopeptides.,similarity:Belongs to the FKBP-type PPlase family. FKBP1 subfamily.,similarity:Contains 1 PPlase FKBP-type domain.,tissue specificity:Ubiquitous for both isoforms with highest levels in brain and thymus.,		

Validation Data



Western blot analysis of lysates from A431 cells, primary antibody was diluted at 1:1000, 4°over night

Contact information

Orders: order.cn@immunoway.com
Support: support.cn@immunoway.com
Telephone: 400-8787-807(China)
Website: <http://www.immunoway.com.cn>
Address: 2200 Ringwood Ave San Jose, CA 95131 USA



Please scan the QR code
to access additional
product information:
FKBP1B Rabbit pAb

For Research Use Only. Not for Use in Diagnostic Procedures.

[Antibody](#) | [ELISA Kits](#) | [Protein](#) | [Reagents](#)