

REL1 Rabbit pAb

CatalogNo: YN2036

Key Features

Host Species

- Rabbit

Reactivity

- Human,Rat,Mouse

Applications

- WB,ELISA

MW

- 20kD (Observed)

Isotype

- IgG

Recommended Dilution Ratios

WB 1:500-2000

ELISA 1:5000-20000

Storage

Storage* -15°C to -25°C/1 year(Do not lower than -25°C)

Formulation Liquid in PBS containing 50% glycerol, and 0.02% sodium azide.

Basic Information

Clonality Polyclonal

Immunogen Information

Immunogen Synthesized peptide derived from part region of human protein

Specificity REL1 Polyclonal Antibody detects endogenous levels of protein.

Target Information

Gene name RLN1

Protein Name Prorelaxin H1 [Cleaved into: Relaxin B chain; Relaxin A chain]

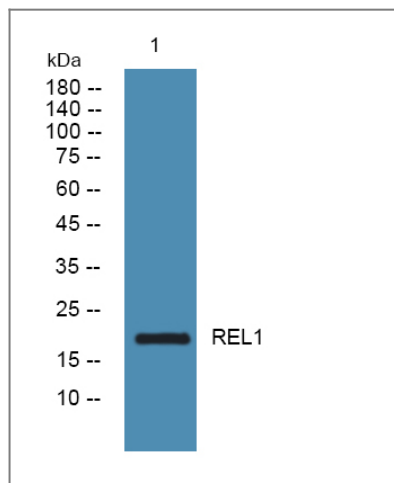
Organism	Gene ID	UniProt ID
Human	6013;	P04808;
Mouse		P47932;
Rat		P01347;

Cellular Localization Secreted.

Tissue specificity Prostate. Not expressed in placenta, decidua or ovary.

Function Function:Relaxin is an ovarian hormone that acts with estrogen to produce dilatation of the birth canal in many mammals. May be involved in remodeling of connective tissues during pregnancy, promoting growth of pubic ligaments and ripening of the cervix.,similarity:Belongs to the insulin family.,subunit:Heterodimer of a B chain and an A chain linked by two disulfide bonds.,tissue specificity:Prostate. Not expressed in placenta, decidua or ovary.,

Validation Data



Western blot analysis of lysates from DU145 cells, primary antibody was diluted at 1:1000, 4°over night

Contact information

Orders: order.cn@immunoway.com
Support: support.cn@immunoway.com
Telephone: 400-8787-807(China)
Website: <http://www.immunoway.com.cn>
Address: 2200 Ringwood Ave San Jose, CA 95131 USA



Please scan the QR code to access additional product information:
REL1 Rabbit pAb

