

## OPT Rabbit pAb

CatalogNo: YN1965

### Key Features

#### Host Species

- Rabbit

#### Reactivity

- Human, Mouse

#### Applications

- WB, ELISA

#### MW

- 36kD (Observed)

#### Isotype

- IgG

### Recommended Dilution Ratios

WB 1:500-2000

ELISA 1:5000-20000

### Storage

**Storage\*** -15°C to -25°C/1 year (Do not lower than -25°C)

**Formulation** Liquid in PBS containing 50% glycerol, and 0.02% sodium azide.

### Basic Information

**Clonality** Polyclonal

### Immunogen Information

**Immunogen** Synthesized peptide derived from part region of human protein

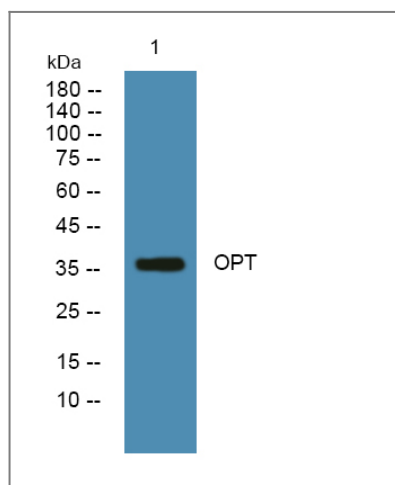
**Specificity** OPT Polyclonal Antibody detects endogenous levels of protein.

### Target Information

**Gene name** OPTC OPT

|                              |   |                        |                         |
|------------------------------|---|------------------------|-------------------------|
| <b>Protein Name</b>          | Opticin (Oculoglycan)   |                        |                         |
|                              | <b>Organism</b>   | <b>Gene ID</b>         | <b>UniProt ID</b>       |
|                              | Human   | <a href="#">26254;</a> | <a href="#">Q9UBM4;</a> |
|                              | Mouse   |                        | <a href="#">Q920A0;</a> |
| <b>Cellular Localization</b> | Secreted, extracellular space, extracellular matrix .   |                        |                         |
| <b>Tissue specificity</b>    | Expressed in cartilage and synovial membranes (at protein level) (PubMed:18164633, PubMed:23845380). Expressed in the retina, iris, ligament, skin and fetal liver (at protein level) (PubMed:12019215, PubMed:25136834). Expressed in the retinal pigment epithelium (at protein level) (PubMed:25136834). Expressed in synovial fibroblasts and subchondral bone osteoblasts (PubMed:18164633). |                        |                         |
| <b>Function</b>              | Function: Binds collagen fibrils.,PTM:O-glycosylated.,similarity:Belongs to the small leucine-rich proteoglycan (SLRP) family. Class III subfamily.,similarity:Contains 7 LRR (leucine-rich) repeats.,tissue specificity:Retina, iris, ligament, skin and fetal liver.,   |                        |                         |

## Validation Data



Western blot analysis of lysates from PC12 cells, primary antibody was diluted at 1:1000, 4° over night

## Contact information

Orders: [order.cn@immunoway.com](mailto:order.cn@immunoway.com)  
 Support: [support.cn@immunoway.com](mailto:support.cn@immunoway.com)  
 Telephone: 400-8787-807(China)  
 Website: <http://www.immunoway.com.cn>  
 Address: 2200 Ringwood Ave San Jose, CA 95131 USA



Please scan the QR code  
 to access additional  
 product information:  
**OPT Rabbit pAb**

