

ACTBM Rabbit pAb

CatalogNo: YN1909

Key Features

Host Species

- Rabbit

Reactivity

- Human

Applications

- WB, ELISA

MW

- 41kD (Observed)

Isotype

- IgG

Recommended Dilution Ratios

WB 1:500-2000

ELISA 1:5000-20000

Storage

Storage*

-15°C to -25°C/1 year(Do not lower than -25°C)

Formulation

Liquid in PBS containing 50% glycerol, 0.5% BSA and 0.02% sodium azide.

Basic Information

Clonality

Polyclonal

Immunogen Information

Immunogen

Synthesized peptide derived from part region of human protein

Specificity

ACTBM Polyclonal Antibody detects endogenous levels of protein.

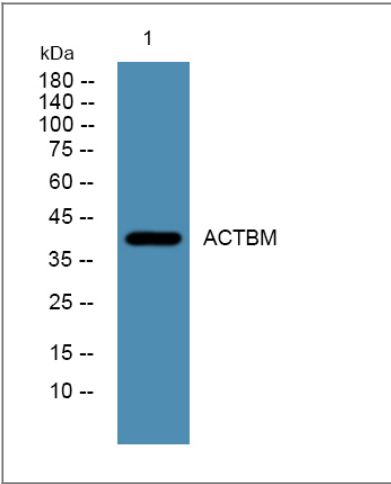
Target Information

Gene name

POTEKP ACTBL3 FKSG30

Protein Name	Putative beta-actin-like protein 3 (Kappa-actin) (POTE ankyrin domain family member K)		
	Organism	Gene ID	UniProt ID
	Human		Q9BYX7 ;
Cellular Localization	Cytoplasm, cytoskeleton .		
Tissue specificity	Expressed in some hepatocellular carcinomas.		
Function	similarity:Belongs to the actin family.,subunit:Interacts with PFN1 and PFDN1. Does not interact with PFN2.,tissue specificity:Expressed in some hepatocellular carcinomas.,		

Validation Data



Western blot analysis of lysates from HCT116 cells, primary antibody was diluted at 1:1000, 4°over night

Contact information

Orders: order.cn@immunoway.com
 Support: support.cn@immunoway.com
 Telephone: 400-8787-807(China)
 Website: <http://www.immunoway.com.cn>
 Address: 2200 Ringwood Ave San Jose, CA 95131 USA



Please scan the QR code
 to access additional
 product information:
ACTBM Rabbit pAb