

ST17A Rabbit pAb

CatalogNo: YN1866

Key Features

Host Species

- Rabbit

Reactivity

- Human

Applications

- WB, ELISA

MW

- 45kD (Observed)

Isotype

- IgG

Storage

Storage*

-15°C to -25°C/1 year(Do not lower than -25°C)

Formulation

Liquid in PBS containing 50% glycerol, 0.5% BSA and 0.02% sodium azide.

Recommended Dilution Ratios

WB 1:500-2000**ELISA 1:5000-20000**

Basic Information

Clonality

Polyclonal

Immunogen Information

Immunogen

Synthesized peptide derived from part region of human protein

Specificity

ST17A Polyclonal Antibody detects endogenous levels of protein.

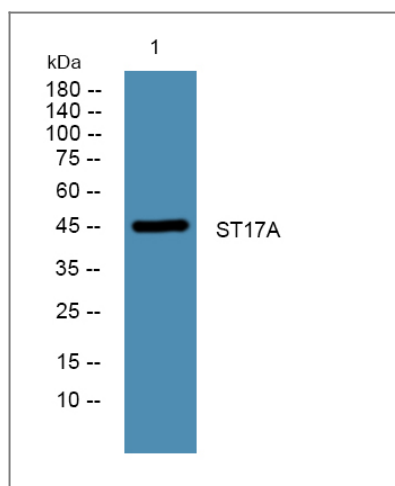
Target Information

Gene name

STK17A DRAK1

Protein Name	Serine/threonine-protein kinase 17A (DAP kinase-related apoptosis-inducing protein kinase 1)		
	Organism	Gene ID	UniProt ID
	Human	9263 ;	Q9UEE5 ;
Cellular Localization	Nucleus .		
Tissue specificity	Highly expressed in placenta. Lower levels in heart, lung, skeletal muscle, kidney and pancreas.		
Function	Catalytic activity:ATP + a protein = ADP + a phosphoprotein.,Function:Acts as a positive regulator of apoptosis.,PTM:Autophosphorylated.,similarity:Belongs to the protein kinase superfamily. CAMK Ser/Thr protein kinase family. DAP kinase subfamily.,similarity:Contains 1 protein kinase domain.,tissue specificity:Highly expressed in placenta. Lower levels in heart, lung, skeletal muscle, kidney and pancreas.,		

Validation Data



Western blot analysis of lysates from U2OS cells, primary antibody was diluted at 1:1000, 4° over night

Contact information

Orders: order.cn@immunoway.com
 Support: support.cn@immunoway.com
 Telephone: 400-8787-807(China)
 Website: <http://www.immunoway.com.cn>
 Address: 2200 Ringwood Ave San Jose, CA 95131 USA



Please scan the QR code to access additional product information:
ST17A Rabbit pAb