

NFE2 Rabbit pAb

CatalogNo: YN1821

| Key Features

Host Species

- Rabbit

Reactivity

- Human, Mouse, Rat

Applications

- WB, ELISA

MW

- 41kD (Observed)

Isotype

- IgG

| Recommended Dilution Ratios

WB 1:500-2000

ELISA 1:5000-20000

| Storage

Storage* -15°C to -25°C/1 year (Do not lower than -25°C)

Formulation Liquid in PBS containing 50% glycerol, 0.5% BSA and 0.02% sodium azide.

| Basic Information

Clonality Polyclonal

| Immunogen Information

Immunogen Synthesized peptide derived from part region of human protein

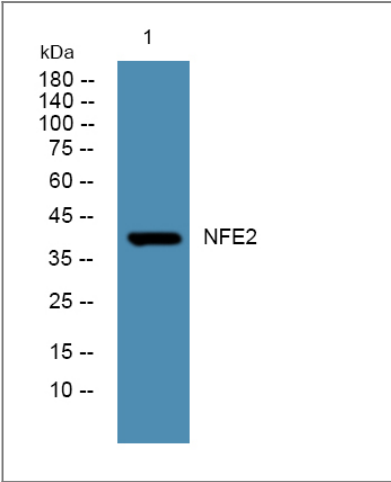
Specificity NFE2 Polyclonal Antibody detects endogenous levels of protein.

| Target Information

Gene name NFE2

Protein Name	Transcription factor NF-E2 45 kDa subunit (Leucine zipper protein NF-E2) (Nuclear factor, erythroid-derived 2 45 kDa subunit) (p45 NF-E2)		
	Organism	Gene ID	UniProt ID
	Human	4778;	Q16621;
	Mouse		Q07279;
	Rat		Q6AYT2;
Cellular Localization	Nucleus, PML body. Cytoplasm. The sumoylated form locates to the nuclear bodies PML oncogenic domains (PODs). Translocated to the cytoplasm through interaction with ITCH.		
Tissue specificity	Expressed in hematopoietic cells and also in colon and testis.		
Function	Function:Required for activity at the locus control region (LCR) upstream of the globin gene complexes. Requires p18 NF-E2 for binding to the NF-E2 motif. May play a role in all aspects of hemoglobin production: globin synthesis, heme synthesis, and the procurement of iron.,similarity:Belongs to the bZIP family.,similarity:Belongs to the bZIP family. CNC subfamily.,similarity:Contains 1 bZIP domain.,subunit:Interacts with MLL2; leading to activate transcription of the beta-globin locus (By similarity). Heterodimer of p45 NF-E2 and p18 NF-E2. Forms high affinity heterodimer with MAFG; the interaction promotes erythropoiesis.,tissue specificity:Expressed in hematopoietic cells and also in colon and testis.,		

Validation Data



Western blot analysis of lysates from U2OS cells, primary antibody was diluted at 1:1000, 4°over night

Contact information

Orders: order.cn@immunoway.com
Support: support.cn@immunoway.com
Telephone: 400-8787-807(China)
Website: <http://www.immunoway.com.cn>
Address: 2200 Ringwood Ave San Jose, CA 95131 USA



Please scan the QR code
to access additional
product information:
NFE2 Rabbit pAb

For Research Use Only. Not for Use in Diagnostic Procedures.

[Antibody](#) | [ELISA Kits](#) | [Protein](#) | [Reagents](#)