

KBRS2 Rabbit pAb

CatalogNo: YN1807

Key Features

Host Species

- Rabbit

Reactivity

- Human, Mouse

Applications

- WB, ELISA

MW

- 21kD (Observed)

Isotype

- IgG

Recommended Dilution Ratios

WB 1:500-2000

ELISA 1:5000-20000

Storage

Storage*

-15°C to -25°C/1 year (Do not lower than -25°C)

Formulation

Liquid in PBS containing 50% glycerol, 0.5% BSA and 0.02% sodium azide.

Basic Information

Clonality

Polyclonal

Immunogen Information

Immunogen

Synthesized peptide derived from part region of human protein

Specificity

KBRS2 Polyclonal Antibody detects endogenous levels of protein.

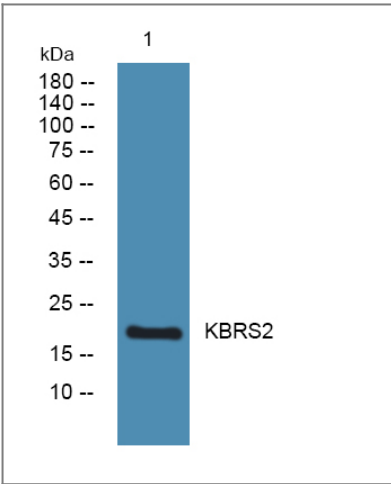
Target Information

Gene name

NKIRAS2 KBRAS2

Protein Name	NF-kappa-B inhibitor-interacting Ras-like protein 2 (I-kappa-B-interacting Ras-like protein 2) (Kappa B-Ras protein 2) (KappaB-Ras2)		
	Organism	Gene ID	UniProt ID
	Human	28511 ;	Q9NYR9 ;
	Mouse		Q9CR56 ;
Cellular Localization	Cytoplasm .		
Tissue specificity	Widely expressed.		
Function	<p>Domain:In contrast to other members of the Ras family, the members of the KappaB-Ras subfamily do not contain the conserved Gly and Gln residues in positions 13 and 65, which are replaced by Ala and Leu residues, respectively, and are therefore similar to the constitutively active forms of oncogenic forms of Ras. This suggests that members of this family are clearly different from other small GTPases proteins.,Function:Atypical Ras-like protein that acts as a potent regulator of NF-kappa-B activity by preventing the degradation of NF-kappa-B inhibitor beta (NFKBIB) by most signals, explaining why NFKBIB is more resistant to degradation. May act by blocking phosphorylation of NFKBIB and nuclear localization of p65/RELA NF-kappa-B subunit. It is unclear whether it acts as a GTPase. Both GTP- and GDP-bound forms block phosphorylation of NFKBIB.,sequence Caution:Absence of residues from position 133 within an exon that change the frame which is not the result of an alternative splicing.,similarity:Belongs to the small GTPase superfamily. Ras family. KappaB-Ras subfamily.,subunit:Interacts with both NF-kappa-B inhibitor alpha (NFKBIA) and beta (NFKBIB) in vitro. However, it probably only interacts with NFKBIB in vivo.,tissue specificity:Widely expressed.,</p>		

| Validation Data



Western blot analysis of lysates from SH-SY5Y cells, primary antibody was diluted at 1:1000, 4°over night

| Contact information

Orders: order.cn@immunoway.com
Support: support.cn@immunoway.com
Telephone: 400-8787-807(China)
Website: <http://www.immunoway.com.cn>
Address: 2200 Ringwood Ave San Jose, CA 95131 USA



Please scan the QR code
to access additional
product information:
KBRs2 Rabbit pAb

For Research Use Only. Not for Use in Diagnostic Procedures.

[Antibody](#) | [ELISA Kits](#) | [Protein](#) | [Reagents](#)