

IGFL2 Rabbit pAb

CatalogNo: YN1763

Key Features

Host Species

- Rabbit

Reactivity

- Human

Applications

- WB,ELISA

MW

- 13kD (Observed)

Isotype

- IgG

Recommended Dilution Ratios

WB 1:500-2000

ELISA 1:5000-20000

Storage

Storage*

-15°C to -25°C/1 year(Do not lower than -25°C)

Formulation

Liquid in PBS containing 50% glycerol, and 0.02% sodium azide.

Basic Information

Clonality

Polyclonal

Immunogen Information

Immunogen

Synthesized peptide derived from part region of human protein AA range: 1-50

Specificity

IGFL2 Polyclonal Antibody detects endogenous levels of protein.

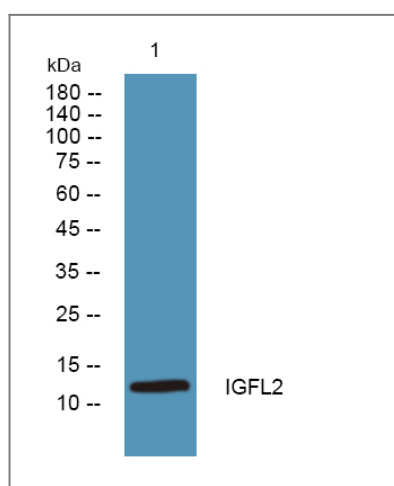
Target Information

Gene name

IGFL2 UNQ645/PRO1275

Protein Name	Insulin growth factor-like family member 2		
	Organism	Gene ID	UniProt ID
	Human	147920;	Q6UWQ7;
Cellular Localization	Secreted .		
Tissue specificity	Detected in cerebellum, heart, placenta, spleen, stomach, testis and thymus.		
Function	similarity:Belongs to the IGFL family.,		

Validation Data



Western blot analysis of lysates from SH-SY5Y cells, primary antibody was diluted at 1:1000, 4° over night

Contact information

Orders: order.cn@immunoway.com
 Support: support.cn@immunoway.com
 Telephone: 400-8787-807(China)
 Website: <http://www.immunoway.com.cn>
 Address: 2200 Ringwood Ave San Jose, CA 95131 USA



Please scan the QR code to access additional product information:
IGFL2 Rabbit pAb

For Research Use Only. Not for Use in Diagnostic Procedures.

[Antibody](#) | [ELISA Kits](#) | [Protein](#) | [Reagents](#)