

## IFNA2 Rabbit pAb

CatalogNo: YN1759

### Key Features

#### Host Species

- Rabbit

#### Reactivity

- Human, Mouse

#### Applications

- WB, ELISA

#### MW

- 20kD (Observed)

#### Isotype

- IgG

### Recommended Dilution Ratios

**WB 1:500-2000**

**ELISA 1:5000-20000**

### Storage

**Storage\*** -15°C to -25°C/1 year (Do not lower than -25°C)

**Formulation** Liquid in PBS containing 50% glycerol, and 0.02% sodium azide.

### Basic Information

**Clonality** Polyclonal

### Immunogen Information

**Immunogen** Synthesized peptide derived from part region of human protein

**Specificity** IFNA2 Polyclonal Antibody detects endogenous levels of protein.

### Target Information

**Gene name** IFNA2

**Protein Name** Interferon alpha-2 (IFN-alpha-2) (Interferon alpha-A) (LeIF A)

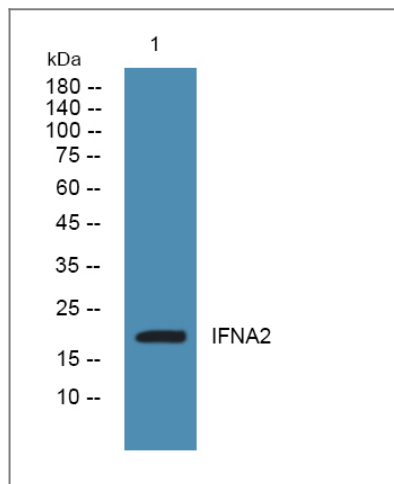
Organism	Gene ID	UniProt ID
Human	<a href="#">3440;</a>	<a href="#">P01563;</a>
Mouse		<a href="#">P01573;</a>

**Cellular Localization** Secreted .

**Tissue specificity** Bone marrow tumor,PCR rescued clones,Placenta,Pooled tissue,

**Function** Function:Produced by macrophages, IFN-alpha have antiviral activities. Interferon stimulates the production of two enzymes: a protein kinase and an oligoadenylate synthetase.,pharmaceutical:Available under the names Roferon-A (Roche) or Intron-A (Schering-Plough). Used as an anticancer drug for its antiproliferative activity.,polymorphism:Three forms exist; alpha-2a (shown here), alpha-2b and alpha-2c.,similarity:Belongs to the alpha/beta interferon family.,

## Validation Data



Western blot analysis of lysates from SW480 cells, primary antibody was diluted at 1:1000, 4°over night

## Contact information

Orders: order.cn@immunoway.com  
Support: support.cn@immunoway.com  
Telephone: 400-8787-807(China)  
Website: <http://www.immunoway.com.cn>  
Address: 2200 Ringwood Ave San Jose, CA 95131 USA



Please scan the QR code to access additional product information:  
**IFNA2 Rabbit pAb**

