

I20L2 Rabbit pAb

CatalogNo: YN1756

Key Features

Host Species

- Rabbit

Reactivity

- Human,Rat,Mouse,

Applications

- WB,ELISA

MW

- 38kD (Observed)

Isotype

- IgG

Recommended Dilution Ratios

WB 1:500-2000

ELISA 1:5000-20000

Storage

Storage*

-15°C to -25°C/1 year(Do not lower than -25°C)

Formulation

Liquid in PBS containing 50% glycerol, 0.5% BSA and 0.02% sodium azide.

Basic Information

Clonality

Polyclonal

Immunogen Information

Immunogen

Synthesized peptide derived from part region of human protein

Specificity

I20L2 Polyclonal Antibody detects endogenous levels of protein.

Target Information

Gene name

ISG20L2 HSD-38 HSD38

Protein Name Interferon-stimulated 20 kDa exonuclease-like 2 (EC 3.1.-.-)

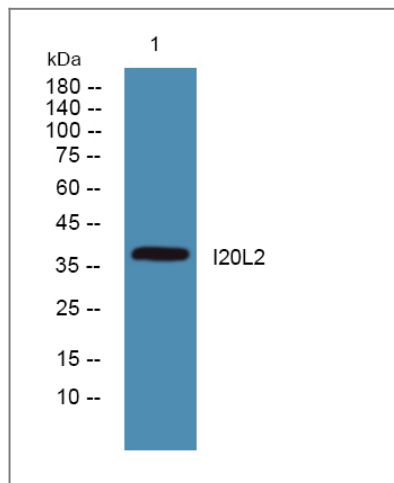
Organism	Gene ID	UniProt ID
Human	81875;	Q9H9L3;
Mouse		Q3U1G5;
Rat		Q6AXU3;

Cellular Localization Nucleus, nucleolus .

Tissue specificity Brain,Testis,

Function Function:3'-> 5'-exoribonuclease involved in ribosome biogenesis in the processing of the 12S pre-rRNA. Displays a strong specificity for a 3'-end containing a free hydroxyl group.,similarity:Contains 1 exonuclease domain.,

Validation Data



Western blot analysis of lysates from SW480 cells, primary antibody was diluted at 1:1000, 4°over night

Contact information

Orders: order.cn@immunoway.com
Support: support.cn@immunoway.com
Telephone: 400-8787-807(China)
Website: <http://www.immunoway.com.cn>
Address: 2200 Ringwood Ave San Jose, CA 95131 USA



Please scan the QR code to access additional product information:
I20L2 Rabbit pAb