

S35C2 Rabbit pAb

CatalogNo: YN1710

| Key Features

Host Species

- Rabbit

Reactivity

- Human, Mouse

Applications

- WB, ELISA

MW

- 40kD (Observed)

Isotype

- IgG

| Recommended Dilution Ratios

WB 1:500-2000

ELISA 1:5000-20000

| Storage

Storage*

-15°C to -25°C/1 year (Do not lower than -25°C)

Formulation

Liquid in PBS containing 50% glycerol, and 0.02% sodium azide.

| Basic Information

Clonality

Polyclonal

| Immunogen Information

Immunogen

Synthesized peptide derived from part region of human protein

Specificity

S35C2 Polyclonal Antibody detects endogenous levels of protein.

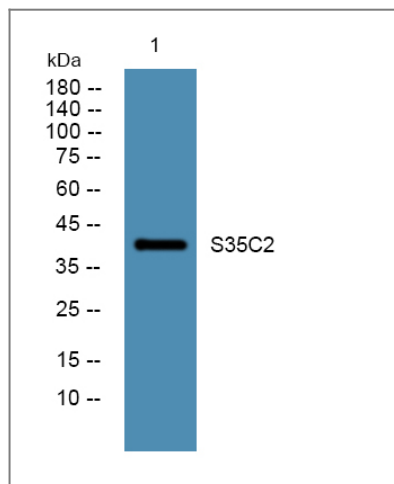
| Target Information

Gene name

SLC35C2 C20orf5 OVCOV1 CGI-15

Protein Name	Solute carrier family 35 member C2 (Ovarian cancer-overexpressed gene 1 protein)		
	Organism	Gene ID	UniProt ID
	Human	51006;	Q9NQQ7;
	Mouse		Q8VCX2;
Cellular Localization	Membrane ; Multi-pass membrane protein . Golgi apparatus, cis-Golgi network membrane . Endoplasmic reticulum-Golgi intermediate compartment membrane .		
Tissue specificity	Ubiquitously expressed although the level of expression is tissue dependent. Overexpressed in ovarian cancer.		
Function	Function:May play an important role in the cellular response to tissue hypoxia.,induction:In hypoxic trophoblast cells.,similarity:Belongs to the TPT transporter family. SLC35C subfamily.,tissue specificity:Ubiquitously expressed although the level of expression is tissue dependent. Overexpressed in ovarian cancer.,		

Validation Data



Western blot analysis of lysates from K562 cells, primary antibody was diluted at 1:1000, 4° over night

Contact information

Orders: order.cn@immunoway.com
 Support: support.cn@immunoway.com
 Telephone: 400-8787-807(China)
 Website: <http://www.immunoway.com.cn>
 Address: 2200 Ringwood Ave San Jose, CA 95131 USA



Please scan the QR code to access additional product information:
S35C2 Rabbit pAb