

## ROAA Rabbit pAb

CatalogNo: YN1689

### Key Features

#### Host Species

- Rabbit

#### Reactivity

- Human, Mouse

#### Applications

- WB, ELISA

#### MW

- 36kD (Observed)

#### Isotype

- IgG

### Recommended Dilution Ratios

WB 1:500-2000

ELISA 1:5000-20000

### Storage

#### Storage\*

-15°C to -25°C/1 year (Do not lower than -25°C)

#### Formulation

Liquid in PBS containing 50% glycerol, 0.5% BSA and 0.02% sodium azide.

### Basic Information

#### Clonality

Polyclonal

### Immunogen Information

#### Immunogen

Synthesized peptide derived from part region of human protein

#### Specificity

ROAA Polyclonal Antibody detects endogenous levels of protein.

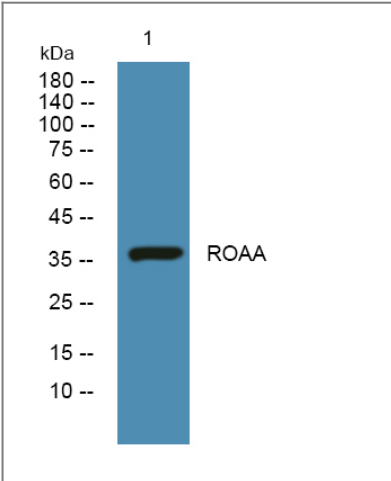
### Target Information

#### Gene name

HNRNPAB ABBP1 HNRPAB

<b>Protein Name</b>	Heterogeneous nuclear ribonucleoprotein A/B (hnRNP A/B) (APOBEC1-binding protein 1) (ABBP-1)		
	<b>Organism</b>	<b>Gene ID</b>	<b>UniProt ID</b>
	Human	<a href="#">3182;</a>	<a href="#">Q99729;</a>
	Mouse		<a href="#">Q99020;</a>
<b>Cellular Localization</b>	Nucleus . Cytoplasm . Localized in cytoplasmic mRNP granules containing untranslated mRNAs.		
<b>Tissue specificity</b>	Ubiquitous.		
<b>Function</b>	Function:Binds single-stranded RNA. Has a high affinity for G-rich and U-rich regions of hnRNA. Also binds to APOB mRNA transcripts around the RNA editing site.,PTM:Dimethylation at Arg-322 is probably asymmetric.,similarity:Contains 2 RRM (RNA recognition motif) domains.,subunit:Interacts with APOBEC1.,tissue specificity:Ubiquitous.,		

| Validation Data



Western blot analysis of lysates from U2OS cells, primary antibody was diluted at 1:1000, 4°over night

| Contact information

Orders: [order.cn@immunoway.com](mailto:order.cn@immunoway.com)  
 Support: [support.cn@immunoway.com](mailto:support.cn@immunoway.com)  
 Telephone: 400-8787-807(China)  
 Website: <http://www.immunoway.com.cn>  
 Address: 2200 Ringwood Ave San Jose, CA 95131 USA



Please scan the QR code  
 to access additional  
 product information:  
**ROAA Rabbit pAb**