

CITE4 Rabbit pAb

CatalogNo: YN1685

Key Features

Host Species

- Rabbit

Reactivity

- Human, Mouse, Rat

Applications

- WB, ELISA

MW

- 20kD (Observed)

Isotype

- IgG

Storage

Storage* -15°C to -25°C/1 year (Do not lower than -25°C)

Formulation Liquid in PBS containing 50% glycerol, 0.5% BSA and 0.02% sodium azide.

Recommended Dilution Ratios

WB 1:500-2000

ELISA 1:5000-20000

Basic Information

Clonality Polyclonal

Immunogen Information

Immunogen Synthesized peptide derived from human protein . at AA range: 30-110

Specificity CITE4 Polyclonal Antibody detects endogenous levels of protein.

Target Information

Gene name CITED4 MRG2

Protein Name Cbp/p300-interacting transactivator 4 (MSG1-related protein 2) (MRG-2)

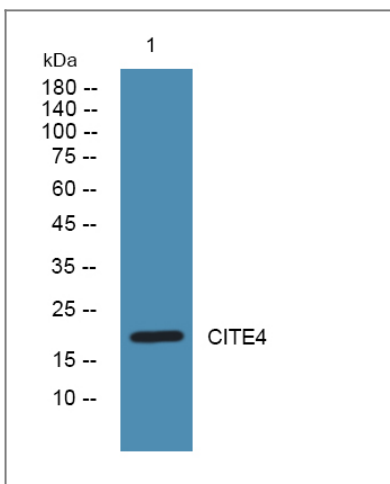
| Organism | Gene ID | UniProt ID |
|----------|--------------------------|--------------------------|
| Human | 163732 ; | Q96RK1 ; |
| Mouse | | Q9WUL8 ; |
| Rat | | Q99MA0 ; |

Cellular Localization Nucleus . Cytoplasm .

Tissue specificity Expressed in most tissues examined with highest levels of expression in heart, liver, skeletal muscle and pancreas. Also expressed in bladder cell line ECV-304 and in various breast cancer cell lines. Also detected in both in situ and invasive breast tumors where its expression is down-regulated and mostly restricted to the cytoplasm of malignant epithelium. Down-regulation of expression is associated with elevated levels of HIF1A and increased tumor growth and angiogenesis.

Function Function:Acts as transcriptional coactivator for TFAP2/AP-2. May function as an inhibitor of transactivation by HIF1A by disrupting HIF1A interaction with CREBBP. May be involved in regulation of gene expression during development and differentiation of blood cells, endothelial cells and mammary epithelial cells.,similarity:Belongs to the CITED family.,subunit:Interacts via its C-terminal region with the CH1 domain of CREBBP and EP300. Interacts with all TFAP2/AP-2 isoforms.,tissue specificity:Expressed in most tissues examined with highest levels of expression in heart, liver, skeletal muscle and pancreas. Also expressed in bladder cell line ECV304 and in various breast cancer cell lines. Also detected in both in situ and invasive breast tumors where its expression is down-regulated and mostly restricted to the cytoplasm of malignant epithelium. Down-regulation of expression is associated with elevated levels of HIF1A and increased tumor growth and angiogenesis.,

Validation Data



Western blot analysis of lysates from DU145 cells, primary antibody was diluted at 1:1000, 4° over night

Contact information

Orders: order.cn@immunoway.com
Support: support.cn@immunoway.com
Telephone: 400-8787-807(China)
Website: http://www.immunoway.com.cn
Address: 2200 Ringwood Ave San Jose, CA 95131 USA



Please scan the QR code
to access additional
product information:
CITE4 Rabbit pAb

For Research Use Only. Not for Use in Diagnostic Procedures.

[Antibody](#) | [ELISA Kits](#) | [Protein](#) | [Reagents](#)