

ALKB3 Rabbit pAb

CatalogNo: YN1683

Key Features

Host Species

- Rabbit

Reactivity

- Human,Rat,Mouse,

Applications

- WB,ELISA

MW

- 31kD (Observed)

Isotype

- IgG

Recommended Dilution Ratios

WB 1:500-2000

ELISA 1:5000-20000

Storage

Storage*

-15°C to -25°C/1 year(Do not lower than -25°C)

Formulation

Liquid in PBS containing 50% glycerol, 0.5% BSA and 0.02% sodium azide.

Basic Information

Clonality

Polyclonal

Immunogen Information

Immunogen

Synthesized peptide derived from human protein . at AA range: 110-190

Specificity

ALKB3 Polyclonal Antibody detects endogenous levels of protein.

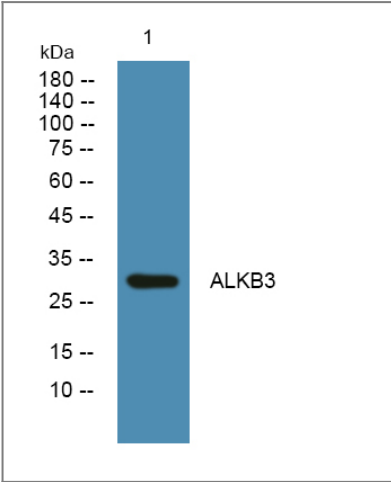
Target Information

Gene name

ALKBH3 ABH3 DEPC1

Protein Name	Alpha-ketoglutarate-dependent dioxygenase alkB homolog 3 (Alkylated DNA repair protein alkB homolog 3) (DEPC-1) (Prostate cancer antigen 1)		
	Organism	Gene ID	UniProt ID
	Human	221120 ;	Q96Q83 ;
	Mouse		Q8K1E6 ;
	Rat		Q5XIC8 ;
Cellular Localization	Nucleus . Cytoplasm . Colocalizes with ASCC2 and ASCC3 in nuclear foci when cells have been exposed to alkylating agents that cause DNA damage (PubMed:29144457). Predominantly localizes to the nucleus. .		
Tissue specificity	Ubiquitous. Detected in heart, pancreas, skeletal muscle, thymus, testis, ovary, spleen, prostate, small intestine, peripheral blood leukocytes, urinary bladder and colon.		
Function	cofactor: Binds 1 Fe(2+) ion per subunit., enzyme regulation: Activated by ascorbate., Function: Dioxygenase that repairs alkylated DNA containing 1-methyladenine and 3-methylcytosine by oxidative demethylation. Has a strong preference for single-stranded DNA. May also act on RNA. Requires molecular oxygen, alpha-ketoglutarate and iron., similarity: Belongs to the alkB family., tissue specificity: Detected in heart, pancreas, skeletal muscle, thymus, testis, ovary, spleen, prostate, small intestine, peripheral blood leukocytes, urinary bladder and colon.,		

Validation Data



Western blot analysis of lysates from SW480 cells, primary antibody was diluted at 1:1000, 4°over night

Contact information

Orders: order.cn@immunoway.com
Support: support.cn@immunoway.com
Telephone: 400-8787-807(China)
Website: <http://www.immunoway.com.cn>
Address: 2200 Ringwood Ave San Jose, CA 95131 USA



Please scan the QR code
to access additional
product information:
ALKB3 Rabbit pAb

For Research Use Only. Not for Use in Diagnostic Procedures.

[Antibody](#) | [ELISA Kits](#) | [Protein](#) | [Reagents](#)