

## ARL11 Rabbit pAb

CatalogNo: YN1676

### Key Features

#### Host Species

- Rabbit

#### Reactivity

- Human,Rat,Mouse,

#### Applications

- WB,ELISA

#### MW

- 21kD (Observed)

#### Isotype

- IgG

### Recommended Dilution Ratios

**WB 1:500-2000**

**ELISA 1:5000-20000**

### Storage

#### Storage\*

-15°C to -25°C/1 year(Do not lower than -25°C)

#### Formulation

Liquid in PBS containing 50% glycerol, 0.5% BSA and 0.02% sodium azide.

### Basic Information

#### Clonality

Polyclonal

### Immunogen Information

#### Immunogen

Synthesized peptide derived from human protein . at AA range: 140-220

#### Specificity

ARL11 Polyclonal Antibody detects endogenous levels of protein.

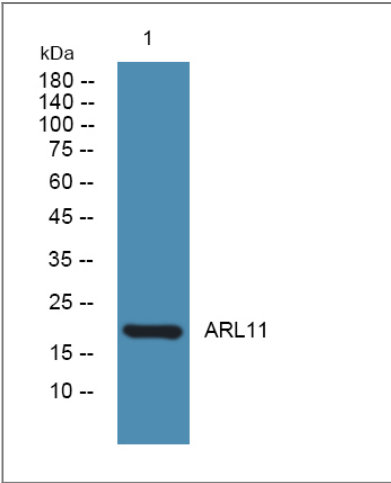
### Target Information

#### Gene name

ARL11 ARLTS1

<b>Protein Name</b>	ADP-ribosylation factor-like protein 11 (ADP-ribosylation factor-like tumor suppressor protein 1)		
	<b>Organism</b>	<b>Gene ID</b>	<b>UniProt ID</b>
	Human	<a href="#">115761</a> ;	<a href="#">Q969Q4</a> ;
	Mouse		<a href="#">Q6P3A9</a> ;
	Rat		<a href="#">Q5BK71</a> ;
<b>Cellular Localization</b>	intracellular,		
<b>Tissue specificity</b>	Expressed in lung and leukocytes.		
<b>Function</b>	Disease:Defects in ARL11 may be a cause of susceptibility to chronic lymphocytic leukemia (CLL) [MIM:151400].,Function:May play a role in apoptosis. May act as a tumor suppressor.,similarity:Belongs to the small GTPase superfamily. Arf family.,tissue specificity:Expressed in lung and leukocytes.,		

| Validation Data



Western blot analysis of lysates from K562 cells, primary antibody was diluted at 1:1000, 4°over night

| Contact information

Orders: order.cn@immunoway.com  
Support: support.cn@immunoway.com  
Telephone: 400-8787-807(China)  
Website: http://www.immunoway.com.cn  
Address: 2200 Ringwood Ave San Jose, CA 95131 USA



Please scan the QR code to access additional product information:  
**ARL11 Rabbit pAb**

