

## CPXCR Rabbit pAb

CatalogNo: YN1666

### Key Features

#### Host Species

- Rabbit

#### Reactivity

- Human, Mouse

#### Applications

- WB, ELISA

#### MW

- 33kD (Observed)

#### Isotype

- IgG

### Recommended Dilution Ratios

WB 1:500-2000

ELISA 1:5000-20000

### Storage

#### Storage\*

-15°C to -25°C/1 year (Do not lower than -25°C)

#### Formulation

Liquid in PBS containing 50% glycerol, and 0.02% sodium azide.

### Basic Information

#### Clonality

Polyclonal

### Immunogen Information

#### Immunogen

Synthesized peptide derived from human protein . at AA range: 30-110

#### Specificity

CPXCR Polyclonal Antibody detects endogenous levels of protein.

### Target Information

#### Gene name

CPXCR1

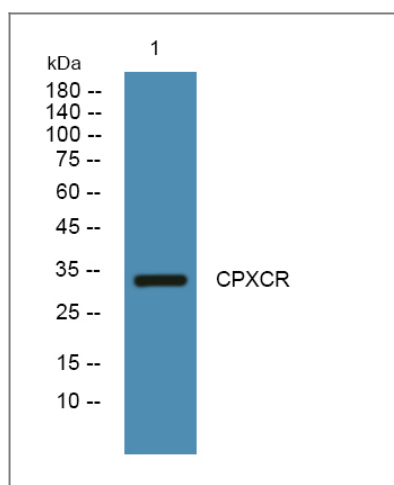
**Protein Name** CPX chromosomal region candidate gene 1 protein (Cancer/testis antigen 77) (CT77)

Organism	Gene ID	UniProt ID
Human	<a href="#">53336</a> ;	<a href="#">Q8N123</a> ;
Mouse		<a href="#">Q3V0P1</a> ;

**Tissue specificity** Expressed in a variety of fetal tissues.

**Function** tissue specificity:Expressed in a variety of fetal tissues.,

## Validation Data



Western blot analysis of lysates from HCT116 cells, primary antibody was diluted at 1:1000, 4°over night

## Contact information

Orders: order.cn@immunoway.com  
Support: support.cn@immunoway.com  
Telephone: 400-8787-807(China)  
Website: <http://www.immunoway.com.cn>  
Address: 2200 Ringwood Ave San Jose, CA 95131 USA



Please scan the QR code to access additional product information:  
**CPXCR Rabbit pAb**

For Research Use Only. Not for Use in Diagnostic Procedures.

[Antibody](#) | [ELISA Kits](#) | [Protein](#) | [Reagents](#)