

MAGB6 Rabbit pAb

CatalogNo: YN1605

Key Features

Host Species

- Rabbit

Reactivity

- Human

Applications

- WB,ELISA

MW

- 44kD (Observed)

Isotype

- IgG

Recommended Dilution Ratios

WB 1:500-2000

ELISA 1:5000-20000

Storage

Storage*

-15°C to -25°C/1 year(Do not lower than -25°C)

Formulation

Liquid in PBS containing 50% glycerol, and 0.02% sodium azide.

Basic Information

Clonality

Polyclonal

Immunogen Information

Immunogen

Synthesized peptide derived from human protein . at AA range: 160-240

Specificity

MAGB6 Polyclonal Antibody detects endogenous levels of protein.

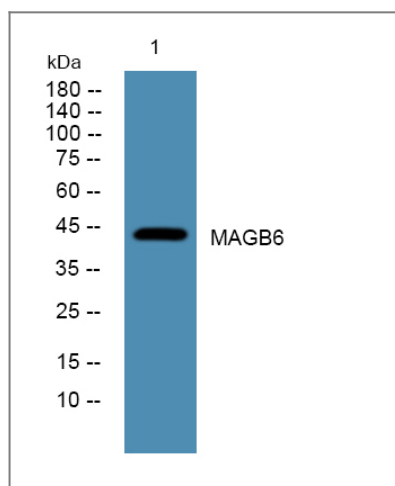
Target Information

Gene name

MAGEB6

| | | | |
|---------------------------|--|-------------------------|-------------------------|
| Protein Name | Melanoma-associated antigen B6 (Cancer/testis antigen 3.4) (CT3.4) (MAGE-B6 antigen) | | |
| | Organism | Gene ID | UniProt ID |
| | Human | 158809; | Q8N7X4; |
| Tissue specificity | Expressed in testis. Not expressed in other normal tissues, but is expressed in tumors of different histological origins. | | |
| Function | similarity:Contains 1 MAGE domain.,tissue specificity:Expressed in testis. Not expressed in other normal tissues, but is expressed in tumors of different histological origins., | | |

Validation Data



Western blot analysis of lysates from K562 cells, primary antibody was diluted at 1:1000, 4°over night

Contact information

Orders: order.cn@immunoway.com
 Support: support.cn@immunoway.com
 Telephone: 400-8787-807(China)
 Website: <http://www.immunoway.com.cn>
 Address: 2200 Ringwood Ave San Jose, CA 95131 USA



Please scan the QR code to access additional product information:
MAGB6 Rabbit pAb

For Research Use Only. Not for Use in Diagnostic Procedures.

[Antibody](#) | [ELISA Kits](#) | [Protein](#) | [Reagents](#)