

MAGB2 Rabbit pAb

CatalogNo: YN1603

Key Features

Host Species

- Rabbit

Reactivity

- Human

Applications

- WB, ELISA

MW

- 35kD (Observed)

Isotype

- IgG

Recommended Dilution Ratios

WB 1:500-2000

ELISA 1:5000-20000

Storage

Storage*

-15°C to -25°C/1 year(Do not lower than -25°C)

Formulation

Liquid in PBS containing 50% glycerol, 0.5% BSA and 0.02% sodium azide.

Basic Information

Clonality

Polyclonal

Immunogen Information

Immunogen

Synthesized peptide derived from human protein . at AA range: 30-110

Specificity

MAGB2 Polyclonal Antibody detects endogenous levels of protein.

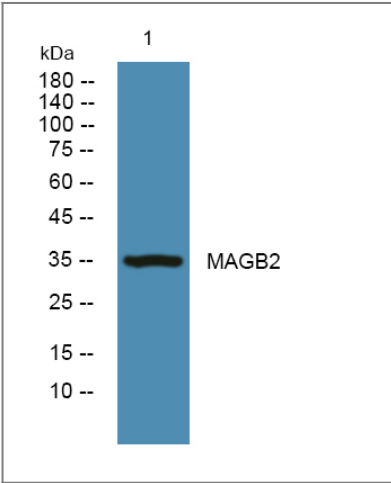
Target Information

Gene name

MAGEB2

Protein Name	Melanoma-associated antigen B2 (Cancer/testis antigen 3.2) (CT3.2) (DSS-AHC critical interval MAGE superfamily 6) (DAM6) (MAGE XP-2 antigen) (MAGE-B2 antigen)		
	Organism	Gene ID	UniProt ID
	Human	4113 ;	O15479 ;
Tissue specificity	Expressed in testis and placenta, and in a significant fraction of tumors of various histologic types.		
Function	similarity:Contains 1 MAGE domain.,tissue specificity:Expressed in testis and placenta, and in a significant fraction of tumors of various histologic types.,		

| Validation Data



Western blot analysis of lysates from SW480 cells, primary antibody was diluted at 1:1000, 4°over night

| Contact information

Orders: order.cn@immunoway.com
Support: support.cn@immunoway.com
Telephone: 400-8787-807(China)
Website: http://www.immunoway.com.cn
Address: 2200 Ringwood Ave San Jose, CA 95131 USA



Please scan the QR code to access additional product information:
MAGB2 Rabbit pAb