

CENPU Rabbit pAb

CatalogNo: YN1585

Orthogonal Validated 

Key Features

Host Species

- Rabbit

Reactivity

- Human,Rat,Mouse,

Applications

- WB,ELISA

MW

- 45kD (Observed)

Isotype

- IgG

Recommended Dilution Ratios

WB 1:500-2000

ELISA 1:5000-20000

Storage

Storage* -15°C to -25°C/1 year(Do not lower than -25°C)**Formulation** Liquid in PBS containing 50% glycerol, and 0.02% sodium azide.

Basic Information

Clonality Polyclonal

Immunogen Information

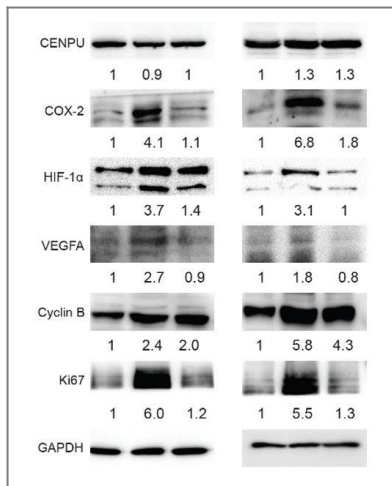
Immunogen Synthesized peptide derived from human protein . at AA range: 160-240**Specificity** CENPU Polyclonal Antibody detects endogenous levels of protein.

Target Information

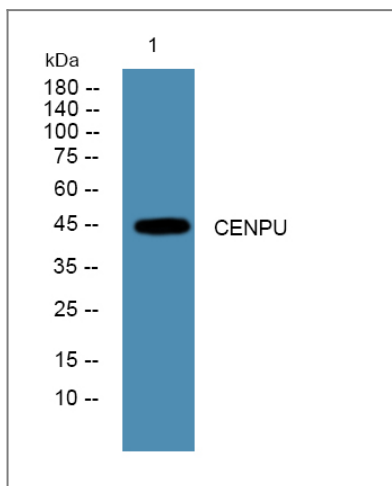
Gene name MLF1IP CENPU ICEN24 KLIP1 PBIP1

Protein Name	Centromere protein U (CENP-U) (Interphase centromere complex protein 24) (KSHV latent nuclear antigen-interacting protein 1) (MLF1-interacting protein) (Polo-box-interacting protein 1) (centromere protein of 50 kDa) (CENP-50)		
	Organism	Gene ID	UniProt ID
	Human	79682;	Q71F23;
	Mouse		Q8C4M7;
	Rat		Q4V8G7;
Cellular Localization	Cytoplasm. Nucleus. Chromosome, centromere, kinetochore. Localizes in the kinetochore domain of centromeres. Colocalizes with PLK1 at the interzone between the inner and the outer kinetochore plates.		
Tissue specificity	Expressed at high levels in the testis, fetal liver, thymus, bone marrow and at lower levels in the lymph nodes, placenta, colon and spleen. Present in all cell lines examined, including B-cells, T-cells, epithelial cells and fibroblast cells. Expressed at high levels in glioblastoma cell lines.		
Function	<p>Function:Component of the CENPA-NAC (nucleosome-associated) complex, a complex that plays a central role in assembly of kinetochore proteins, mitotic progression and chromosome segregation. The CENPA-NAC complex recruits the CENPA-CAD (nucleosome distal) complex and may be involved in incorporation of newly synthesized CENPA into centromeres. Plays an important role in the correct PLK1 localization to the mitotic kinetochores. A scaffold protein responsible for the initial recruitment and maintenance of the kinetochore PLK1 population until its degradation. Involved in transcriptional repression.,PTM:Phosphorylated by PLK1 at Thr-78, creating a self-tethering site that specifically interacts with the polo-box domain of PLK1.,subcellular location:Localizes in the kinetochore domain of centromeres. Colocalizes with PLK1 at the interzone between the inner and the outer kinetochore plates.,subunit:Component of the CENPA-NAC complex, at least composed of CENPA, CENPC, CENPH, CENPM, CENPN, CENPT and MLF1IP/CENPU. The CENPA-NAC complex interacts with the CENPA-CAD complex, composed of CENPI, CENPK, CENPL, CENPO, CENPP, CENPQ, CENPR and CENPS. Interacts with the N-terminal domain of Kaposi's sarcoma-associated herpesvirus latent nuclear antigen (LNA). Interacts with MLF1. Interacts with PLK1.,tissue specificity:Expressed at high levels in the testis, fetal liver, thymus, bone marrow and at lower levels in the lymph nodes, placenta, colon and spleen. Present in all cell lines examined, including B-cells, T-cells, epithelial cells and fibroblast cells. Expressed at high levels in glioblastoma cell lines.,</p>		

| Validation Data



Zhao, Shaorong et al. "Deciphering the performance of polo-like kinase 1 in triple-negative breast cancer progression according to the centromere protein U-phosphorylation pathway." American journal of cancer research vol. 11,5 2142-2158. 15 May. 2021



Western blot analysis of lysates from SH-SY5Y cells, primary antibody was diluted at 1:1000, 4° over night

Contact information

Orders: order.cn@immunoway.com
 Support: support.cn@immunoway.com
 Telephone: 400-8787-807(China)
 Website: <http://www.immunoway.com.cn>
 Address: 2200 Ringwood Ave San Jose, CA 95131 USA



Please scan the QR code to access additional product information:
CENPU Rabbit pAb

For Research Use Only. Not for Use in Diagnostic Procedures.

[Antibody](#) | [ELISA Kits](#) | [Protein](#) | [Reagents](#)