

CENPS Rabbit pAb

CatalogNo: YN1583

Key Features

Host Species

- Rabbit

Reactivity

- Human, Mouse

Applications

- WB, ELISA

MW

- 15kD (Observed)

Isotype

- IgG

Recommended Dilution Ratios

WB 1:500-2000

ELISA 1:5000-20000

Storage

Storage*

-15°C to -25°C/1 year (Do not lower than -25°C)

Formulation

Liquid in PBS containing 50% glycerol, 0.5% BSA and 0.02% sodium azide.

Basic Information

Clonality

Polyclonal

Immunogen Information

Immunogen

Synthesized peptide derived from human protein . at AA range: 70-150

Specificity

CENPS Polyclonal Antibody detects endogenous levels of protein.

Target Information

Gene name

APITD1 CENPS FAAP16 MHF1

Protein Name Centromere protein S (CENP-S) (Apoptosis-inducing TAF9-like domain-containing protein 1) (FANCM-interacting histone fold protein 1) (Fanconi anemia-associated polypeptide of 16 kDa)

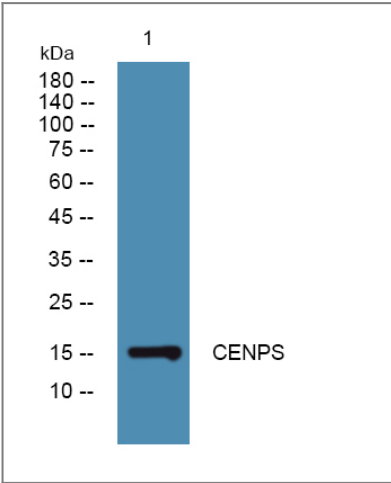
Organism	Gene ID	UniProt ID
Human	100526739;	Q8N2Z9;
Mouse		Q9D084;

Cellular Localization Nucleus . Chromosome, centromere . Chromosome, centromere, kinetochore . Assembly of CENPS and CENPX and its partner subunits CENPT and CENPW at centromeres occurs through a dynamic exchange mechanism. Although exchange is continuous in the cell cycle, de novo assembly starts principally during mid-late S phase and is complete by G2. CENPS is more stably bound at the kinetochore than CENPX (PubMed:19620631, PubMed:24522885). During S phase, rapidly recruited to DNA interstrand cross-links that block replication (PubMed:20347428). Recruited to DNA damage sites about 20 minutes following UV irradiation, reaching a plateau after approximately 40 minutes (PubMed:24522885). .

Tissue specificity Ubiquitously expressed.

Function Caution:The sequence shown here is derived from an Ensembl automatic analysis pipeline and should be considered as preliminary data.,Function:Binds to all human somatostatin receptor (SSTR) subtypes. It also inhibits cAMP production induced by forskolin through SSTRs.,Function:Component of the CENPA-CAD (nucleosome distal) complex, a complex recruited to centromeres which is involved in assembly of kinetochore proteins, mitotic progression and chromosome segregation.,similarity:Belongs to the somatostatin family.,similarity:Belongs to the TAF9 family.,subcellular location:Localizes exclusively in the centromeres. The CENPA-CAD complex is probably recruited on centromeres by the CENPA-NAC complex.,subunit:Component of the CENPA-CAD complex, composed of CENPI, CENPK, CENPL, CENPO, CENPP, CENPQ, CENPR and CENPS. The CENPA-CAD complex interacts with the CENPA-NAC complex, at least composed of CENPA, CENPC, CENPH, CENPM, CENPN, CENPT and MLF1IP/CENPU.,tissue specificity:Expressed in a subset of GABAergic cells in the cortex and hippocampus.,tissue specificity:Ubiquitously expressed.,

Validation Data



Western blot analysis of lysates from KB cells, primary antibody was diluted at 1:1000, 4°over night

| Contact information

Orders: order.cn@immunoway.com
Support: support.cn@immunoway.com
Telephone: 400-8787-807(China)
Website: <http://www.immunoway.com.cn>
Address: 2200 Ringwood Ave San Jose, CA 95131 USA



Please scan the QR code
to access additional
product information:
CENPS Rabbit pAb

For Research Use Only. Not for Use in Diagnostic Procedures.

[Antibody](#) | [ELISA Kits](#) | [Protein](#) | [Reagents](#)