

## CENPR Rabbit pAb

CatalogNo: YN1582

### Key Features

#### Host Species

- Rabbit

#### Reactivity

- Human,Rat,Mouse,

#### Applications

- WB,ELISA

#### MW

- 19kD (Observed)

#### Isotype

- IgG

### Recommended Dilution Ratios

**WB 1:500-2000**

**ELISA 1:5000-20000**

### Storage

#### Storage\*

-15°C to -25°C/1 year(Do not lower than -25°C)

#### Formulation

Liquid in PBS containing 50% glycerol, and 0.02% sodium azide.

### Basic Information

#### Clonality

Polyclonal

### Immunogen Information

#### Immunogen

Synthesized peptide derived from human protein . at AA range: 10-90

#### Specificity

CENPR Polyclonal Antibody detects endogenous levels of protein.

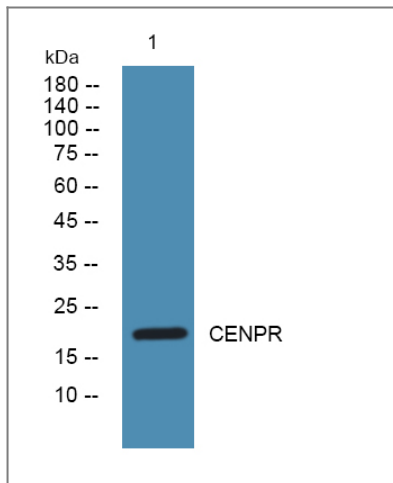
### Target Information

#### Gene name

ITGB3BP CENPR NRIF3

<b>Protein Name</b>	Centromere protein R (CENP-R) (Beta-3-endonexin) (Integrin beta-3-binding protein) (Nuclear receptor-interacting factor 3)		
	<b>Organism</b>	<b>Gene ID</b>	<b>UniProt ID</b>
	Human	<a href="#">23421</a> ;	<a href="#">Q13352</a> ;
	Mouse		<a href="#">Q9CQ82</a> ;
	Rat		<a href="#">Q5U1Z7</a> ;
<b>Cellular Localization</b>	[Isoform 1]: Nucleus. Chromosome, centromere. Chromosome, centromere, kinetochore.; [Isoform 2]: Nucleus.; [Isoform 3]: Nucleus. Cytoplasm. Isoform 3 is predominantly nuclear and weakly cytoplasmic.; [Isoform 4]: Cytoplasm.		
<b>Tissue specificity</b>	Widely expressed. Expressed in spleen, thymus, prostate, ovary, small intestine and white blood cells. Highly expressed in testis and colon. Isoform 4 is expressed in platelets, lymphocytes and granulocytes.		
<b>Function</b>	<p>Domain:Contains one Leu-Xaa-Xaa-Ile-Leu (LXXIL) motif, which is essential for the association with nuclear receptors.,Domain:Contains one Leu-Xaa-Xaa-Leu-Leu (LXXLL) motif, a motif known to be important for the association with nuclear receptors. Such motif, which is required for an efficient association with nuclear receptors, is however not essential.,Domain:The DD1 domain (also called RepD1 domain) mediates the corepressor function and is essential in the triggering of apoptosis.,Function:Transcription coregulator that can have both coactivator and corepressor functions. Isoform 1, but not other isoforms, is involved in the coactivation of nuclear receptors for retinoid X (RXRs) and thyroid hormone (TRs) in a ligand-dependent fashion. In contrast, it does not coactivate nuclear receptors for retinoic acid, vitamin D, progesterone receptor, nor glucocorticoid. Acts as a coactivator for estrogen receptor alpha. Acts as a transcriptional corepressor via its interaction with the NFKB1 NF-kappa-B subunit, possibly by interfering with the transactivation domain of NFKB1. Induces apoptosis in breast cancer cells, but not in other cancer cells, via a caspase-2 mediated pathway that involves mitochondrial membrane permeabilization but does not require other caspases. May also act as an inhibitor of cyclin A-associated kinase. Also acts a component of the CENPA-CAD (nucleosome distal) complex, a complex recruited to centromeres which is involved in assembly of kinetochore proteins, mitotic progression and chromosome segregation. May be involved in incorporation of newly synthesized CENPA into centromeres via its interaction with the CENPA-NAC complex.,induction:By estrogen.,subcellular location:Isoform 3 is predominantly nuclear and weakly cytoplasmic.,subunit:Homodimer; mediated by the coiled coil domain. Isoform 3, but not other isoforms, interacts with the cytoplasmic tail of integrin ITGB3. The relevance of the interaction with ITGB3 is however uncertain, since isoform 3 is mainly nuclear. Interacts with CCNA2 and MTA1. Interacts with NFKB1 NF-kappa-B subunit. Component of the CENPA-CAD complex, composed of CENPI, CENPK, CENPL, CENPO, CENPP, CENPQ, CENPR and CENPS. The CENPA-CAD complex interacts with the CENPA-NAC complex, at least composed of CENPA, CENPC, CENPH, CENPM, CENPN, CENPT and MLF1IP/CENPU.,tissue specificity:Widely expressed. Expressed in spleen, thymus, prostate, ovary, small intestine and white blood cells. Highly expressed in testis and colon. Isoform 4 is expressed in platelets, lymphocytes and granulocytes.,</p>		

**Validation Data**



Western blot analysis of lysates from K562 cells, primary antibody was diluted at 1:1000, 4°over night

## Contact information

Orders: [order.cn@immunoway.com](mailto:order.cn@immunoway.com)  
Support: [support.cn@immunoway.com](mailto:support.cn@immunoway.com)  
Telephone: 400-8787-807(China)  
Website: <http://www.immunoway.com.cn>  
Address: 2200 Ringwood Ave San Jose, CA 95131 USA



Please scan the QR code  
to access additional  
product information:  
**CENPR Rabbit pAb**

For Research Use Only. Not for Use in Diagnostic Procedures.

[Antibody](#) | [ELISA Kits](#) | [Protein](#) | [Reagents](#)