

## CENPF Rabbit pAb

CatalogNo: YN1575

### Key Features

**Host Species**

- Rabbit

**Reactivity**

- Human

**Applications**

- IHC,IF

**MW**

- 353kD (Observed)

**Isotype**

- IgG

### Recommended Dilution Ratios

IHC 1:50-300

IF 1:50-200

### Storage

**Storage\***

-15°C to -25°C/1 year(Do not lower than -25°C)

**Formulation**

Liquid in PBS containing 50% glycerol, 0.5% BSA and 0.02% sodium azide.

### Basic Information

**Clonality**

Polyclonal

### Immunogen Information

**Immunogen**

Synthesized peptide derived from human protein . at AA range: 2190-2270

**Specificity**

CENPF Polyclonal Antibody detects endogenous levels of protein.

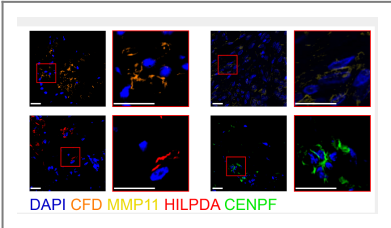
### Target Information

**Gene name**

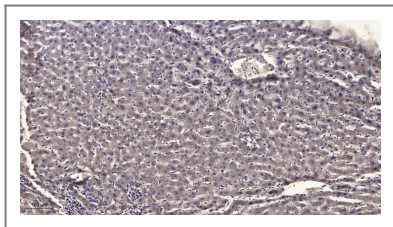
CENPF

<b>Protein Name</b>	Centromere protein F (CENP-F) (AH antigen) (Kinetochore protein CENPF) (Mitotin)		
	<b>Organism</b>	<b>Gene ID</b>	<b>UniProt ID</b>
	Human	<a href="#">1063</a> ;	<a href="#">P49454</a> ;
<b>Cellular Localization</b>	Cytoplasm, perinuclear region. Nucleus matrix. Chromosome, centromere, kinetochore. Cytoplasm, cytoskeleton, spindle. Relocalizes to the kinetochore/centromere (coronal surface of the outer plate) and the spindle during mitosis. Observed in nucleus during interphase but not in the nucleolus. At metaphase becomes localized to areas including kinetochore and mitotic apparatus as well as cytoplasm. By telophase, is concentrated within the intracellular bridge at either side of the mid-body.		
<b>Tissue specificity</b>	Epithelium,Liver,Mammary carcinoma,		
<b>Function</b>	developmental stage:Gradually accumulates during the cell cycle, reaching peak levels in G2 and M phase, and is rapidly degraded upon completion of mitosis.,Function:Required for kinetochore function and chromosome segregation in mitosis. Required for kinetochore localization of dynein, LIS1, NDE1 and NDEL1. Regulates recycling of the plasma membrane by acting as a link between recycling vesicles and the microtubule network though its association with STX4 and SNAP25. Acts as a potential inhibitor of pocket protein-mediated cellular processes during development by regulating the activity of RB proteins during cell division and proliferation. May play a regulatory or permissive role in the normal embryonic cardiomyocyte cell cycle and in promoting continued mitosis in transformed, abnormally dividing neonatal cardiomyocytes. Interaction with RB directs embryonic stem cells toward a cardiac lineage. Involved in the regulation of DNA synthesis and hence cell cycle progression, via its C-terminus. Has a potential role regulating skeletal myogenesis and in cell differentiation in embryogenesis. Involved in dendritic cell regulation of T-cell immunity against chlamydia.,PTM:Hyperphosphorylated during mitosis. Phosphorylated upon DNA damage, probably by ATM or ATR.,similarity:Belongs to the centromere protein F family.,subcellular location:Relocalizes to the kinetochore/centromere (coronal surface of the outer plate) and the spindle during mitosis. Observed in nucleus during interphase but not in the nucleolus. At metaphase becomes localized to areas including kinetochore and mitotic apparatus as well as cytoplasm. By telophase, is concentrated within the intracellular bridge at either side of the mid-body.,subunit:Interacts with and STX4 (via C-terminus) (By similarity). Interacts (via N-terminus) with RBL1, RBL2 and SNAP25 (By similarity). Self-associates. Interacts with CENP-E and BUBR1 (via C-terminus). Interacts (via C-terminus) with NDE1, NDEL1 and RB1.,		

Validation Data



Pan-cancer spatially resolved single-cell analysis reveals the crosstalk between cancer-associated fibroblasts and tumor microenvironment. Molecular Cancer Qiang Feng IF Human breast cancer (BRCA) tissue,liver hepatocellular carcinoma (LIHC) tissue



Immunohistochemical analysis of paraffin-embedded human liver cancer. 1, Antibody was diluted at 1:200(4° overnight). 2, Tris-EDTA,pH9.0 was used for antigen retrieval. 3,Secondary antibody was diluted at 1:200(room temperature, 45min).

## | Contact information

Orders: order.cn@immunoway.com  
Support: support.cn@immunoway.com  
Telephone: 400-8787-807(China)  
Website: <http://www.immunoway.com.cn>  
Address: 2200 Ringwood Ave San Jose, CA 95131 USA



Please scan the QR code  
to access additional  
product information:  
**CENPF Rabbit pAb**

---

For Research Use Only. Not for Use in Diagnostic Procedures.

[Antibody](#) | [ELISA Kits](#) | [Protein](#) | [Reagents](#)