

## ZFHX4 Rabbit pAb

CatalogNo: YN1539

### Key Features

#### Host Species

- Rabbit

#### Reactivity

- Human, Mouse

#### Applications

- WB, IHC, IF

#### MW

- 392kD (Observed)

#### Isotype

- IgG

### Recommended Dilution Ratios

**WB 1:500-1000**

**IHC 1:200-500**

**IF 1:50-200**

### Storage

**Storage\*** -15°C to -25°C/1 year (Do not lower than -25°C)

**Formulation** Liquid in PBS containing 50% glycerol, 0.5% BSA and 0.02% sodium azide.

### Basic Information

**Clonality** Polyclonal

### Immunogen Information

**Immunogen** Synthesized peptide derived from part region of human protein

**Specificity** ZFHX4 Polyclonal Antibody detects endogenous levels of protein.

### Target Information

**Gene name** ZFHX4

**Protein Name** Zinc finger homeobox protein 4 (Zinc finger homeodomain protein 4) (ZFH-4)

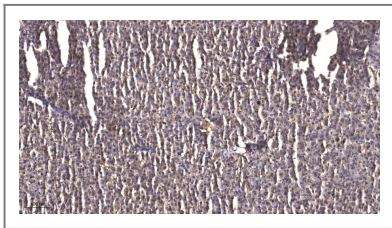
| Organism | Gene ID                | UniProt ID              |
|----------|------------------------|-------------------------|
| Human    | <a href="#">79776;</a> | <a href="#">Q86UP3;</a> |
| Mouse    |                        | <a href="#">Q9JJN2;</a> |

**Cellular Localization** Nucleus .

**Tissue specificity** Expressed in brain, skeletal muscle and liver. Very low expression in stomach.

**Function** Disease:A chromosomal aberration involving [ZFHX4] is found in one patient with ptosis. Translocation t(1;8)(p34.3;q21.12).,Function:May play a role in neural and muscle differentiation (By similarity). May be involved in transcriptional regulation.,similarity:Belongs to the krueppel C2H2-type zinc-finger protein family.,similarity:Contains 20 C2H2-type zinc fingers.,similarity:Contains 4 homeobox DNA-binding domains.,tissue specificity:Expressed in brain, skeletal muscle and liver. Very low expression in stomach.,

## Validation Data



Immunohistochemical analysis of paraffin-embedded human liver cancer. 1, Antibody was diluted at 1:200(4° overnight). 2, Tris-EDTA,pH9.0 was used for antigen retrieval. 3,Secondary antibody was diluted at 1:200(room temperature, 45min).

## Contact information

Orders: [order.cn@immunoway.com](mailto:order.cn@immunoway.com)  
Support: [support.cn@immunoway.com](mailto:support.cn@immunoway.com)  
Telephone: 400-8787-807(China)  
Website: <http://www.immunoway.com.cn>  
Address: 2200 Ringwood Ave San Jose, CA 95131 USA



Please scan the QR code to access additional product information:  
**ZFHX4 Rabbit pAb**

For Research Use Only. Not for Use in Diagnostic Procedures.

[Antibody](#) | [ELISA Kits](#) | [Protein](#) | [Reagents](#)