

## ZFHX2 Rabbit pAb

CatalogNo: YN1538

### | Key Features

#### Host Species

- Rabbit

#### Reactivity

- Human, Mouse

#### Applications

- IHC, IF

#### MW

- 282kD (Observed)

#### Isotype

- IgG

### | Recommended Dilution Ratios

IHC 1:50-300

IF 1:50-200

### | Storage

#### Storage\*

-15°C to -25°C/1 year (Do not lower than -25°C)

#### Formulation

Liquid in PBS containing 50% glycerol, 0.5% BSA and 0.02% sodium azide.

### | Basic Information

#### Clonality

Polyclonal

### | Immunogen Information

#### Immunogen

Synthesized peptide derived from part region of human protein

#### Specificity

ZFHX2 Polyclonal Antibody detects endogenous levels of protein.

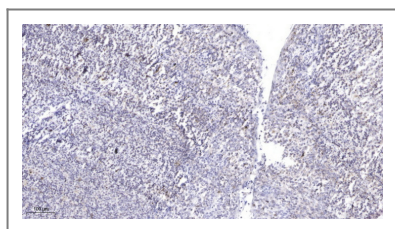
### | Target Information

#### Gene name

ZFHX2 KIAA1056 KIAA1762 ZNF409

<b>Protein Name</b>	Zinc finger homeobox protein 2 (Zinc finger homeodomain protein 2) (ZFH-2)		
	<b>Organism</b>	<b>Gene ID</b>	<b>UniProt ID</b>
	Human	<a href="#">85446;</a>	<a href="#">Q9C0A1;</a>
<b>Cellular Localization</b>	Nucleus .		
<b>Tissue specificity</b>	Brain,		
<b>Function</b>	Function:May be involved in transcriptional regulation.,similarity:Contains 3 homeobox DNA-binding domains.,similarity:Contains 6 C2H2-type zinc fingers.,		

## Validation Data



Immunohistochemical analysis of paraffin-embedded human tonsil. 1, Antibody was diluted at 1:200(4° overnight). 2, Tris-EDTA,pH9.0 was used for antigen retrieval. 3,Secondary antibody was diluted at 1:200(room temperature, 45min).

## Contact information

Orders: order.cn@immunoway.com  
 Support: support.cn@immunoway.com  
 Telephone: 400-8787-807(China)  
 Website: <http://www.immunoway.com.cn>  
 Address: 2200 Ringwood Ave San Jose, CA 95131 USA



Please scan the QR code to access additional product information:  
**ZFH2 Rabbit pAb**

For Research Use Only. Not for Use in Diagnostic Procedures.

[Antibody](#) | [ELISA Kits](#) | [Protein](#) | [Reagents](#)