

CCG8 Rabbit pAb

CatalogNo: YN1524

Key Features

Host Species

- Rabbit

Reactivity

- Human, Mouse, Rat

Applications

- WB, ELISA

MW

- 46kD (Observed)

Isotype

- IgG

Recommended Dilution Ratios

WB 1:500-2000

ELISA 1:5000-20000

Storage

Storage* -15°C to -25°C/1 year (Do not lower than -25°C)

Formulation Liquid in PBS containing 50% glycerol, 0.5% BSA and 0.02% sodium azide.

Basic Information

Clonality Polyclonal

Immunogen Information

Immunogen Synthesized peptide derived from human protein . at AA range: 140-220

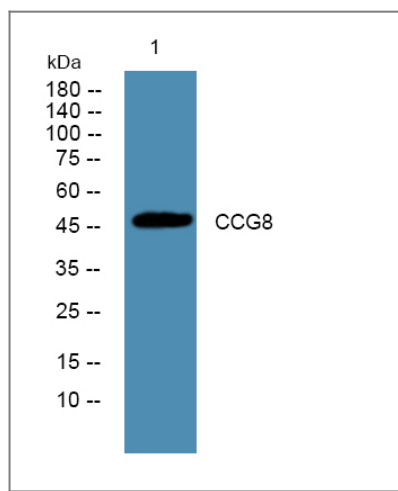
Specificity CCG8 Polyclonal Antibody detects endogenous levels of protein.

Target Information

Gene name CACNG8 CACNG6

Protein Name	Voltage-dependent calcium channel gamma-8 subunit (Neuronal voltage-gated calcium channel gamma-8 subunit) (Transmembrane AMPAR regulatory protein gamma-8) (TARP gamma-8)		
	Organism	Gene ID	UniProt ID
	Human	59283;	Q8WXS5;
	Mouse		Q8VHW2;
	Rat		Q8VHW5;
Cellular Localization	Cell membrane ; Multi-pass membrane protein . Cell junction, synapse, postsynaptic density membrane .		
Tissue specificity	Detected in heart left ventricle.		
Function	Function:Thought to stabilize the calcium channel in an inactivated (closed) state.,similarity:Belongs to the PMP-22/EMP/MP20 family. CACNG subfamily.,subunit:The L-type calcium channel is composed of five subunits: alpha-1, alpha-2/delta, beta and gamma.,		

Validation Data



Western blot analysis of lysates from A431 cells, primary antibody was diluted at 1:1000, 4°over night

Contact information

Orders: order.cn@immunoway.com
 Support: support.cn@immunoway.com
 Telephone: 400-8787-807(China)
 Website: <http://www.immunoway.com.cn>
 Address: 2200 Ringwood Ave San Jose, CA 95131 USA



Please scan the QR code
 to access additional
 product information:
CCG8 Rabbit pAb

