

SEC20 Rabbit pAb

CatalogNo: YN1521

Key Features

Host Species

- Rabbit

Reactivity

- Human,Rat,Mouse

Applications

- WB,ELISA

MW

- 25kD (Observed)

Isotype

- IgG

Recommended Dilution Ratios

WB 1:500-2000**ELISA 1:5000-20000**

Storage

Storage*

-15°C to -25°C/1 year(Do not lower than -25°C)

Formulation

Liquid in PBS containing 50% glycerol, 0.5% BSA and 0.02% sodium azide.

Basic Information

Clonality

Polyclonal

Immunogen Information

Immunogen

Synthesized peptide derived from part region of human protein

Specificity

SEC20 Polyclonal Antibody detects endogenous levels of protein.

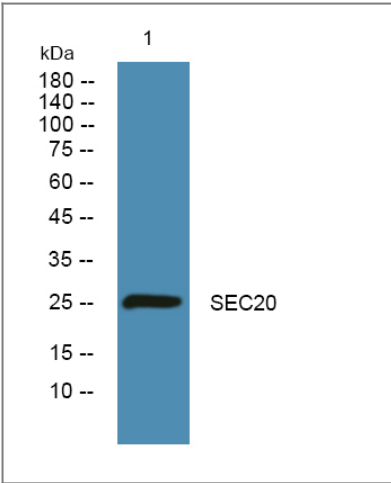
Target Information

Gene name

BNIP1 NIP1 SEC20L TRG8

Protein Name	Vesicle transport protein SEC20 (BCL2/adenovirus E1B 19 kDa protein-interacting protein 1) (Transformation-related gene 8 protein) (TRG-8)		
	Organism	Gene ID	UniProt ID
	Human	662;	Q12981;
	Mouse		Q6QD59;
	Rat		Q8VHI8;
Cellular Localization	Endoplasmic reticulum membrane ; Single-pass type IV membrane protein . Mitochondrion membrane ; Single-pass type IV membrane protein . Localization to the mitochondrion is regulated by RNF186. .		
Tissue specificity	Isoform 1 is highly expressed in heart, brain, liver skeletal muscle and pancreas. Isoform 3 is moderately expressed in placenta, lung and kidney. Isoform 4 is highly expressed in testis and small intestine.		
Function	Alternative products:Additional isoforms seem to exist,Function:SNARE that may be involved in targeting and fusion of Golgi-derived retrograde transport vesicles with the ER. Required for maintenance of ER network. Implicated in the suppression of cell death.,miscellaneous:Silencing of BNIP1 disrupts ER morphology.,similarity:Belongs to the SEC20 family.,subunit:Component of a SNARE complex consisting of STX18, USE1L, BNIP1/SEC20L and SEC22B. Interacts directly with STX18, RINT1/TIP20L and NAPA. Interacts with ZW10 through RINT1. Interacts with BCL2 and adenovirus E1B 19 kDa protein.,tissue specificity:High levels of isoform 1 in heart, brain, liver skeletal muscle and pancreas. Moderate levels of isoform 3 in placenta, lung and kidney. High levels of isoform 4 in testis and small intestine.,		

Validation Data



Western blot analysis of lysates from Jurkat cells, primary antibody was diluted at 1:1000, 4°over night

Contact information

Orders: order.cn@immunoway.com
Support: support.cn@immunoway.com
Telephone: 400-8787-807(China)
Website: <http://www.immunoway.com.cn>
Address: 2200 Ringwood Ave San Jose, CA 95131 USA



Please scan the QR code
to access additional
product information:
SEC20 Rabbit pAb

For Research Use Only. Not for Use in Diagnostic Procedures.

[Antibody](#) | [ELISA Kits](#) | [Protein](#) | [Reagents](#)