

## VATG2 Rabbit pAb

CatalogNo: YN1513

### Key Features

#### Host Species

- Rabbit

#### Reactivity

- Human, Mouse

#### Applications

- WB, ELISA

#### MW

- 12kD (Observed)

#### Isotype

- IgG

### Recommended Dilution Ratios

**WB 1:500-2000**

**ELISA 1:5000-20000**

### Storage

**Storage\*** -15°C to -25°C/1 year (Do not lower than -25°C)

**Formulation** Liquid in PBS containing 50% glycerol, and 0.02% sodium azide.

### Basic Information

**Clonality** Polyclonal

### Immunogen Information

**Immunogen** Synthesized peptide derived from part region of human protein AA range: 1-50

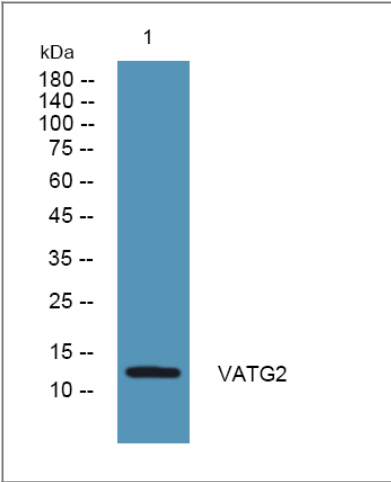
**Specificity** VATG2 Polyclonal Antibody detects endogenous levels of protein.

### Target Information

**Gene name** ATP6V1G2 ATP6G ATP6G2 NG38

<b>Protein Name</b>	V-type proton ATPase subunit G 2 (V-ATPase subunit G 2) (V-ATPase 13 kDa subunit 2) (Vacuolar proton pump subunit G 2)		
	<b>Organism</b>	<b>Gene ID</b>	<b>UniProt ID</b>
	Human	<a href="#">534</a> ;	<a href="#">O95670</a> ;
	Mouse		<a href="#">Q9WTT4</a> ;
<b>Cellular Localization</b>	Melanosome . Cytoplasmic vesicle, clathrin-coated vesicle membrane ; Peripheral membrane protein . Highly enriched in late-stage melanosomes. .		
<b>Tissue specificity</b>	Brain.		
<b>Function</b>	Function:Catalytic subunit of the peripheral V1 complex of vacuolar ATPase (V-ATPase). V-ATPase is responsible for acidifying a variety of intracellular compartments in eukaryotic cells.,similarity:Belongs to the V-ATPase G subunit family.,subcellular location:Highly enriched in late-stage melanosomes.,subunit:V-ATPase is an heteromultimeric enzyme composed of a peripheral catalytic V1 complex (components A to H) attached to an integral membrane V0 proton pore complex (components: a, c, c', c'' and d).,tissue specificity:Brain.,		

| Validation Data



Western blot analysis of lysates from K562 cells, primary antibody was diluted at 1:1000, 4°over night

| Contact information

Orders: order.cn@immunoway.com  
Support: support.cn@immunoway.com  
Telephone: 400-8787-807(China)  
Website: http://www.immunoway.com.cn  
Address: 2200 Ringwood Ave San Jose, CA 95131 USA



Please scan the QR code to access additional product information:  
**VATG2 Rabbit pAb**

