

## VA0D2 Rabbit pAb

CatalogNo: YN1510

### Key Features

#### Host Species

- Rabbit

#### Reactivity

- Human,Rat,Mouse

#### Applications

- WB,ELISA

#### MW

- 38kD (Observed)

#### Isotype

- IgG

### Recommended Dilution Ratios

**WB 1:500-2000**

**ELISA 1:5000-20000**

### Storage

#### Storage\*

-15°C to -25°C/1 year(Do not lower than -25°C)

#### Formulation

Liquid in PBS containing 50% glycerol, 0.5% BSA and 0.02% sodium azide.

### Basic Information

#### Clonality

Polyclonal

### Immunogen Information

#### Immunogen

Synthesized peptide derived from part region of human protein

#### Specificity

VA0D2 Polyclonal Antibody detects endogenous levels of protein.

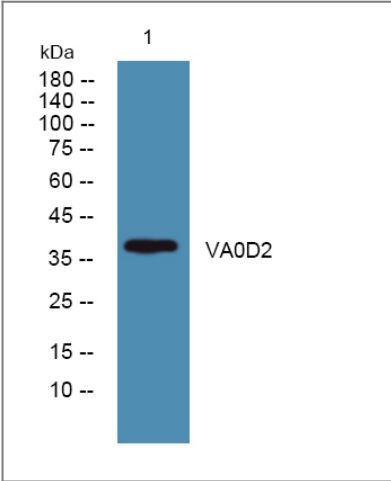
### Target Information

#### Gene name

ATP6V0D2

<b>Protein Name</b>	V-type proton ATPase subunit d 2 (V-ATPase subunit d 2) (Vacuolar proton pump subunit d 2)		
	<b>Organism</b>	<b>Gene ID</b>	<b>UniProt ID</b>
	Human	<a href="#">245972;</a>	<a href="#">Q8N8Y2;</a>
	Mouse		<a href="#">Q80SY3;</a>
	Rat		<a href="#">Q5FVL0;</a>
<b>Cellular Localization</b>	lysosomal membrane,early endosome,endosome membrane,membrane,apical plasma membrane,vacuolar proton-transporting V-type ATPase complex,phagocytic vesicle membrane,proton-transporting V-type ATPase, V0 domain,plasma membrane proton-transporting V		
<b>Tissue specificity</b>	Kidney, osteoclast and lung.		
<b>Function</b>	<p>Function:Subunit of the integral membrane V0 complex of vacuolar ATPase. Vacuolar ATPase is responsible for acidifying a variety of intracellular compartments in eukaryotic cells, thus providing most of the energy required for transport processes in the vacuolar system. May play a role in coupling of proton transport and ATP hydrolysis.,similarity:Belongs to the V-ATPase V0D/AC39 subunit family.,subunit:V-ATPase is an heteromultimeric enzyme composed of a peripheral catalytic V1 complex (components A to H) attached to an integral membrane V0 proton pore complex (components: a, c, c', c'' and d).,tissue specificity:Kidney, osteoclast and lung.,</p>		

Validation Data



Western blot analysis of lysates from SW480 cells, primary antibody was diluted at 1:1000, 4°over night

Contact information

Orders: order.cn@immunoway.com  
Support: support.cn@immunoway.com  
Telephone: 400-8787-807(China)  
Website: <http://www.immunoway.com.cn>  
Address: 2200 Ringwood Ave San Jose, CA 95131 USA



Please scan the QR code  
to access additional  
product information:  
**VA0D2 Rabbit pAb**

---

For Research Use Only. Not for Use in Diagnostic Procedures.

[Antibody](#) | [ELISA Kits](#) | [Protein](#) | [Reagents](#)