

## VATB2 Rabbit pAb

CatalogNo: YN1508

Orthogonal Validated 

### Key Features

#### Host Species

- Rabbit

#### Reactivity

- Human,Rat,Mouse,Swine

#### Applications

- WB,ELISA

#### MW

- 56kD (Observed)

#### Isotype

- IgG

### Recommended Dilution Ratios

**WB 1:500-2000****ELISA 1:5000-20000**

### Storage

**Storage\*** -15°C to -25°C/1 year(Do not lower than -25°C)**Formulation** Liquid in PBS containing 50% glycerol, and 0.02% sodium azide.

### Basic Information

**Clonality** Polyclonal

### Immunogen Information

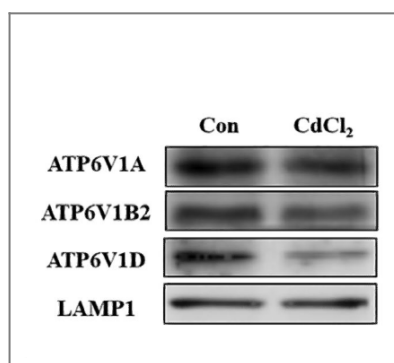
**Immunogen** Synthesized peptide derived from part region of human protein**Specificity** VATB2 Polyclonal Antibody detects endogenous levels of protein.

### Target Information

**Gene name** ATP6V1B2 ATP6B2 VPP3

<b>Protein Name</b>	V-type proton ATPase subunit B, brain isoform (V-ATPase subunit B 2) (Endomembrane proton pump 58 kDa subunit) (HO57) (Vacuolar proton pump subunit B 2)		
	<b>Organism</b>	<b>Gene ID</b>	<b>UniProt ID</b>
	Human	<a href="#">526;</a>	<a href="#">P21281;</a>
	Mouse		<a href="#">P62814;</a>
	Rat		<a href="#">P62815;</a>
<b>Cellular Localization</b>	Apical cell membrane . Melanosome . Cytoplasm . Cytoplasmic vesicle, secretory vesicle, synaptic vesicle membrane ; Peripheral membrane protein . Cytoplasmic vesicle, clathrin-coated vesicle membrane ; Peripheral membrane protein . Identified by mass spectrometry in melanosome fractions from stage I to stage IV. .		
<b>Tissue specificity</b>	Kidney; localizes to early distal nephron, encompassing thick ascending limbs and distal convoluted tubules (at protein level).		
<b>Function</b>	Function:Non-catalytic subunit of the peripheral V1 complex of vacuolar ATPase. V-ATPase is responsible for acidifying a variety of intracellular compartments in eukaryotic cells.,similarity:Belongs to the ATPase alpha/beta chains family.,subcellular location:Endomembrane. Identified by mass spectrometry in melanosome fractions from stage I to stage IV.,subunit:V-ATPase is an heteromultimeric enzyme composed of a peripheral catalytic V1 complex (main components: subunits A, B, C, D, E, and F) attached to an integral membrane V0 proton pore complex (main component: the proteolipid protein).,		

## Validation Data



Autophagy flux inhibition mediated by lysosomal dysfunction participates in the cadmium exposure-induced cardiotoxicity in swine 2022 Mar 14. WB Swine 1:1000 myocardium

## Contact information

Orders: [order.cn@immunoway.com](mailto:order.cn@immunoway.com)  
 Support: [support.cn@immunoway.com](mailto:support.cn@immunoway.com)  
 Telephone: 400-8787-807(China)  
 Website: <http://www.immunoway.com.cn>  
 Address: 2200 Ringwood Ave San Jose, CA 95131 USA



Please scan the QR code to access additional product information:  
**VATB2 Rabbit pAb**

